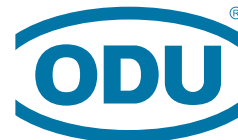


A PERFECT ALLIANCE.



ODU ELECTRICAL CONTACTS

Contact technologies for the most demanding of requirements.
Up to 1,700 A, 100,000 mating cycles and more.

ODU SPRINGTAC®
ODU LAMTAC®
ODU TURNTAC®
ODU STAMPTAC®



ODU ELECTRICAL CONTACTS

ODU ELECTRICAL CONTACTS

FEATURES

- Versatile contact technologies
- Outstanding reliability, lifetime and durability with up to 1 million mating cycles
- Current-carrying capacity of up to 2,400 amperes and more
- Rugged contact systems, suitable even for harsh environment
- Economical solutions for automatic processing
- Very high vibration resistance
- Low, stable contact resistance

APPLICATIONS

- Medical
- Test and measurement
- Military and security
- Industrial
- Energy
- eMobility



All shown connectors are according to IEC 61984:2008 [VDE 0627:2009]; connectors without breaking capacity [COC].

All dimensions are in mm.

Some figures are for illustrative purposes only. Subject to change without notice. Errors and omissions excepted. We reserve the right to change our products and their technical specifications at any time in the interest of technical improvement. This publication supersedes all prior publications.

This publication is also available as a PDF file that can be downloaded from www.odu-connectors.com.

Issue: 2018-04

TABLE OF CONTENTS

THE ODU CORPORATE GROUP	4
PRODUCT INFORMATION	11
Contact technology	12
Contact principle	14
ODU quick change head QCH (connector saver) principle	19
Overview ODU Electrical Contacts	20
Application specific solutions	22
ODU SPRINGTAC®	25
ODU SPRINGTAC socket with solder/screw termination	26
ODU SPRINGTAC socket with crimp termination	27
ODU SPRINGTAC socket with outer thread	28
ODU contact pin with solder/screw termination	29
ODU contact pin with crimp termination	30
ODU SPRINGTAC externally flexed contact pin with solder/screw termination	31
ODU SPRINGTAC® FLATSOCKET	33
ODU SPRINGTAC Flatsocket for 2-point measurement, with crimp termination	34
ODU SPRINGTAC Flatsocket for 2-point measurement, quick change head QCH (connector saver)	35
ODU SPRINGTAC Flatsocket for 4-point measurement (Kelvin measurement), with solder termination	36
ODU LAMTAC®	39
ODU LAMTAC socket with solder/screw termination	40
ODU LAMTAC socket with crimp termination	41
ODU LAMTAC socket with outer thread	42
ODU contact pin with solder/screw termination	44
ODU contact pin with crimp termination	45
ODU TURNTAC®	47
ODU TURNTAC socket with solder/screw termination	48
ODU TURNTAC socket with crimp termination	49
ODU contact pin with solder/screw termination	50
ODU contact pin with crimp termination	51
TOOLS AND ACCESSORIES	53
Termination technology	54
Crimping tools	56
Maintenance kit	60
TECHNICAL INFORMATION	63
Current-carrying capacity	64
Installation instructure	68
Conversions/AWG	69
Chamber dimensions for ODU SPRINGTAC Flatsocket	70
Technical terms	72

A PERFECT ALLIANCE.

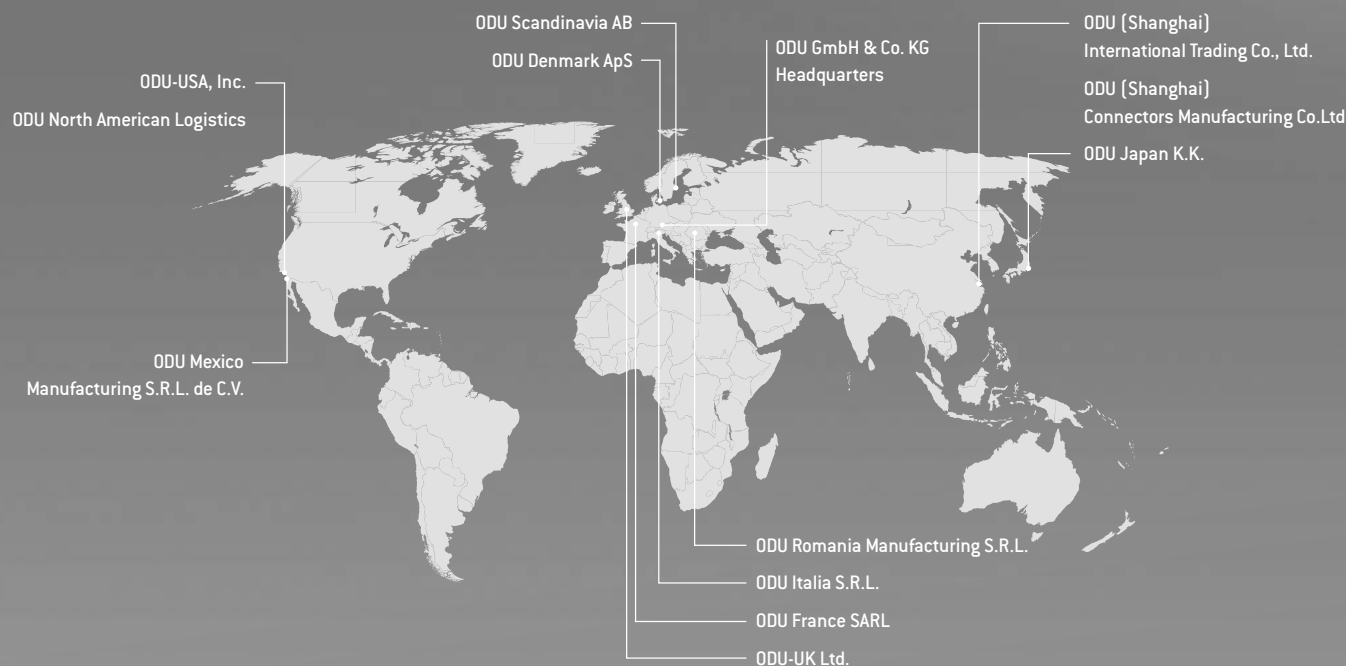
CREATING CONNECTIONS, BUILDING ALLIANCES, COLLABORATING INTO THE FUTURE: WHETHER TWO TECHNICAL COMPONENTS COME TOGETHER TO FORM A UNIT OR PEOPLE COME TOGETHER TO STRIVE FOR GREAT RESULTS – THE KEY IS TO ASPIRE IN ACHIEVING SUPERB RESULTS. THIS GOAL DRIVES OUR WORK. **PERFECT CONNECTIONS THAT INSPIRE AND DELIVER ON THE PROMISES.**





A PERFECT ALLIANCE.

ODU WORLDWIDE



ODU GROUP OVERVIEW

- More than 75 years of experience in connector technology
- A turnover of 170 million Euro
- Over 1,900 employees worldwide
- 9 sales subsidiaries in China, Denmark, France, Germany, Italy, Japan, Sweden, the UK and the US as well as 5 production and logistics sites
- All technologies under one roof: Design and development, machine tool and special machine construction, injection, stamping, turning, surface technology, assembly and cable assembly

As of February 2018

CERTIFIED QUALITY

- DIN EN ISO 9001
- IATF 16949
- DIN EN ISO 14001
- ISO 13485
- Wide range of UL, CSA, VG and DVA licenses
- UL certified cable assembly

For a complete list of our certifications, please visit our website.

INGENIOUS IDEAS PERFECT SOLUTIONS

ODU'S PRODUCT PORTFOLIO.



COMPACT MODULAR CONNECTOR SOLUTIONS

- Application-specific hybrid interface
- For manual mating and automatic docking
- The highest packing density
- Flexible modular construction
- Multitude of data transmission modules
- Variety of locking options available
- For the transmission of signals, power, high current, high voltage, coax, high-speed data, fiber optics and other media such as air or fluid.
- Mating cycles scalable as required from 10,000 to over 100,000 (1 million)



PUSH-PULL CIRCULAR CONNECTORS

- Circular connector series in robust metal or plastic housing
- Contacts for soldering, crimping and PCB termination
- Optional selectable Push-Pull locking ensuring a secure connection at all times as well as easy to release Break-Away function
- 2 up to 55 contacts
- IP 50 to IP 69
- Autoclavable for medical applications
- Hybrid inserts for combined transmission



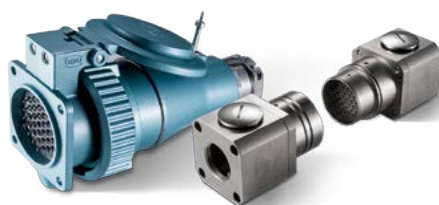
ELECTRICAL CONTACTS

- Versatile connector technologies
- Outstanding reliability, lifetime and durability
- Up to 1 million mating cycles
- Current-carrying capacity of up to 2,400 amperes and more
- Rugged contact systems, suitable even for harsh environments
- Economical solutions for automatic processing



A PERFECT ALLIANCE.

+ Versatile connector solutions for transmission of power, signals, data, or media – ODU never fails to offer the right interface when quality and absolute reliability are the top priorities.



HEAVY-DUTY & DOCKING AND ROBOTIC CONNECTOR SOLUTIONS

- Extremely durable even under extreme / harsh environments
- Interference-free and secure connection, even under vibration
- Up to 500 A (higher currents upon request)
- High contact security due to the springwire technology
- High pin density due to a minimum contact diameter
- Low contact resistance



APPLICATION AND CUSTOMER-SPECIFIC SOLUTIONS

- Contacts, connectors and assemblies for the highest technical requirements as well as special applications
- First-class implementation expertise
- High level of vertical manufacturing – all competences and key technologies under one roof
- Expert advice based on mutual partnership
- Fast development and production



CABLE ASSEMBLY

- Complete systems from a single source based on years of assembly expertise
- State-of-the-art production facilities with 100% end testing, high-voltage testing, component testing and pressure testing up to 100 bar
- Cleanroom production
- Hot-melt and high-pressure injection molding
- Customer-specific labeling
- Rapid prototyping of samples

MORE THAN A CONNECTION

OUR KNOW-HOW FOR YOUR SUCCESS.

All shown connectors are according
to DIN EN 61984:2009
connectors without breaking capacity (COC)!

General tolerances
to
DIN ISO 2768-mK

Tolerance to
DIN ISO 8015

2013

date

prep.

11.06.

name

app.

Unterblom

norm.

designation

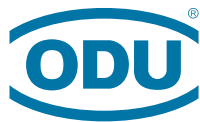
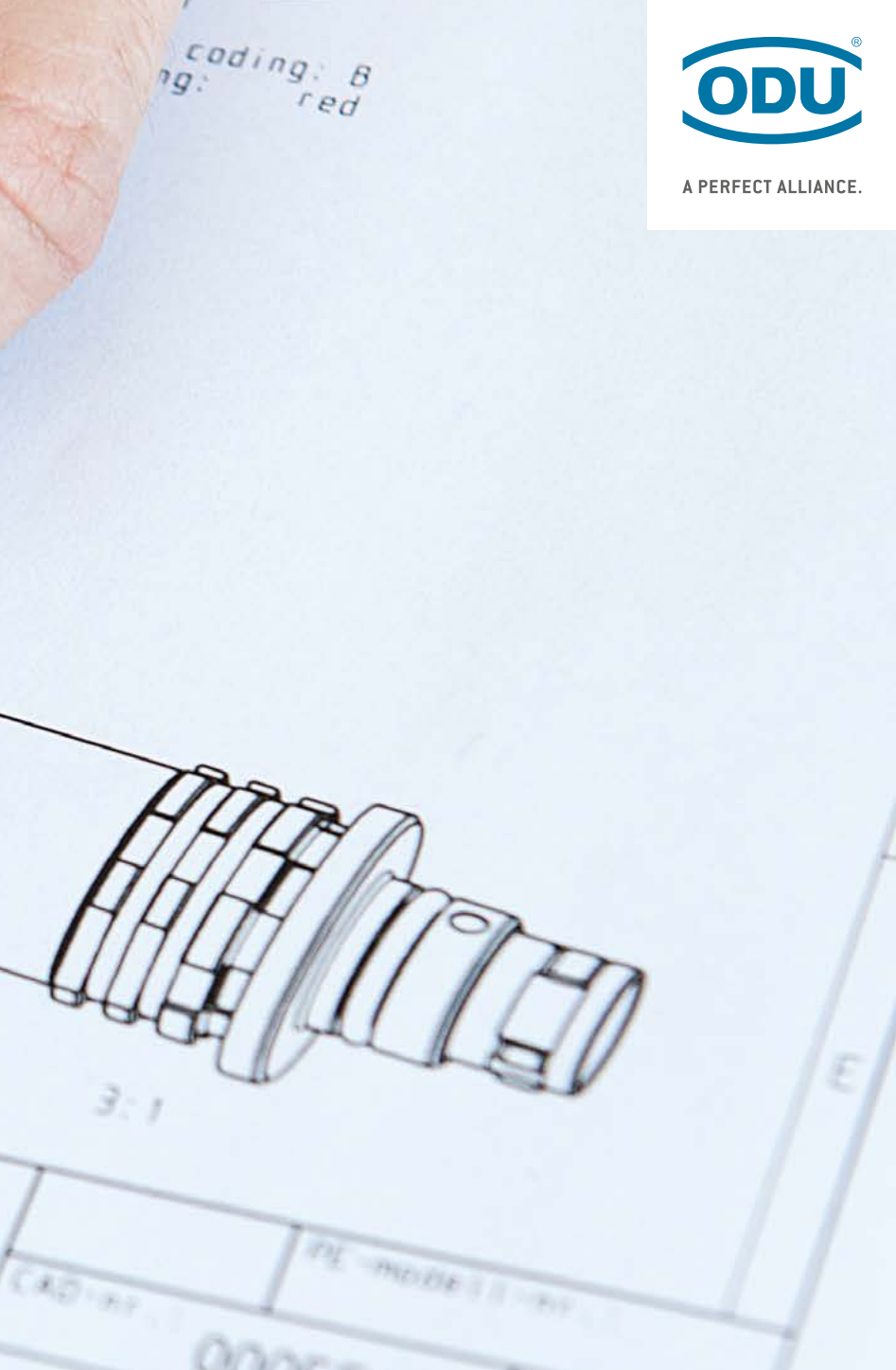
Break-A

HIGH PERFORMANCE CONNECTOR TECHNOLOGY FOR DEMANDING KEY MARKETS

Customers rely on ODU technology wherever first-class, high-performance connector solutions are required. All our skills go into our products to ensure your success. In addition to the top quality, reliable stability and maximum flexibility in customer-specific requirements, our products also stand for dynamics, reliability, safety, precision, efficiency and sustainability. And they guarantee unrestricted functionality for the final product due to our high quality connectors. ODU – A PERFECT ALLIANCE.

APPLICATION-SPECIFIC SOLUTIONS

Demands that can't be pigeon-holed call for creative specialists who think outside the box. ODU offers the type of expertise that focuses solely on the specific requirements of our customers. For every development order we get, we not only perform a thorough check to make sure it's feasible, we intensively incorporate our customers in the ongoing design process. This guarantees an impressive, custom-fit final result. Our solutions are frequently based on the modifications of our products, especially for the ODU MINI-SNAP and ODU-MAC connectors.



A PERFECT ALLIANCE.

MEDICAL

TEST AND MEASUREMENT

MILITARY AND SECURITY

INDUSTRIAL

ENERGY

EMOBILITY

HIGH LEVEL OF VERTICAL INTEGRATION

ODU combines all the competences and key technologies for the connector manufacturing. These include design and development, machine tool and special machine construction, injection, stamping, turning, surface technology, assembly and cable assembly and our own test laboratory.

INDIVIDUAL CABLE ASSEMBLY

Our production skills together with our cutting edge production facilities from Europe, China and the USA enable us to deliver to our customers locally tested assemblies and also global ones.



ODU ELECTRICAL CONTACTS



PRODUCT INFORMATION

Contact technology	<u>12</u>
Contact principle	<u>14</u>
ODU quick change head QCH (connector saver) principle	<u>19</u>
Overview ODU Electrical Contacts	<u>20</u>
Application specific solutions	<u>22</u>

CONTACT TECHNOLOGIES FOR A WIDE VARIETY OF SPECIFICATIONS

ODU's extensive product portfolio offers highly specialized contact types. The functionality and properties of each contact system have been precisely geared to each specific application. They are available in a wide range of dimensions and termination types.

+ THE MARATHON RUNNER:

Outstanding reliability, lifetime and durability with up to 1 million mating cycles

- Contact with springwire technology
- Very high contact security
- Low mating and demating forces
- Very high vibration resistance
- Low contact resistance
- High current-carrying capacity



ODU SPRINGTAC®

+ THE HIGH PERFORMANCE CONTACT:

Maximum current-carrying capacity and temperature resistance of up to 180 °C

- Contact with lamella technology
- Current-carrying capacity of up to 2,400 amperes
- > 10,000 mating cycles
- High vibration resistance
- Low contact resistance
- Automated lamella assembly
- High contact security



ODU LAMTAC®



ODU TURNTAC®

+ THE RUGGED ONE:

Suitable even for harsh environments

- Turned, slotted contacts
- > 10,000 mating cycles
- Low and stable mating and demating forces
- Tiniest dimensions possible, down to 0.3 mm contact diameter
- Mating possible at an angle of up to 5°

+ THE HIGH VOLUME CONTACT:

Economical contact systems for automatic processing

- Stamped contacts
- > 10,000 mating cycles
- Standard contacts for use in charging plugs (IP 67)
- Cost-efficient alternative for high volumes



ODU STAMPTAC®

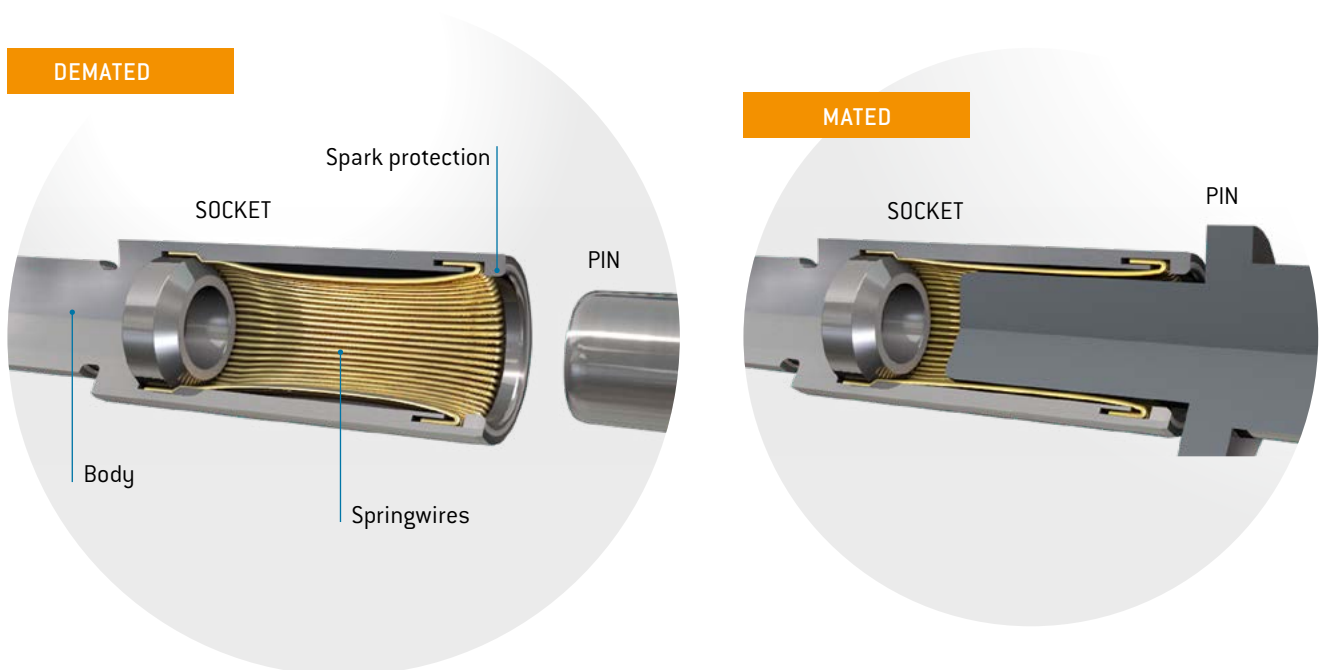
BEST CONNECTIONS – THE CONTACT PRINCIPLE

Electrical Contacts from ODU meet the highest quality standards and ensure secure and reliable connections. Behind this achievement are 80 years of experience in the electrical connector technology. In addition to the springwire and the lamella technology ODU also offers turned, slotted contact systems and stamping technology for a wide variety of specifications.

ODU SPRINGTAC®

Contacts with springwire technology

The ODU SPRINGTAC is the most effective contact system on the market. It offers maximum reliability and an exceptionally long durability. Due to the many independent wire springs, a constant transmission is provided at all times. Even the smallest contact, at 0.76 mm in diameter, contains 15 individual springs. In other words, 15 contact surfaces are present in this tiny contact area.



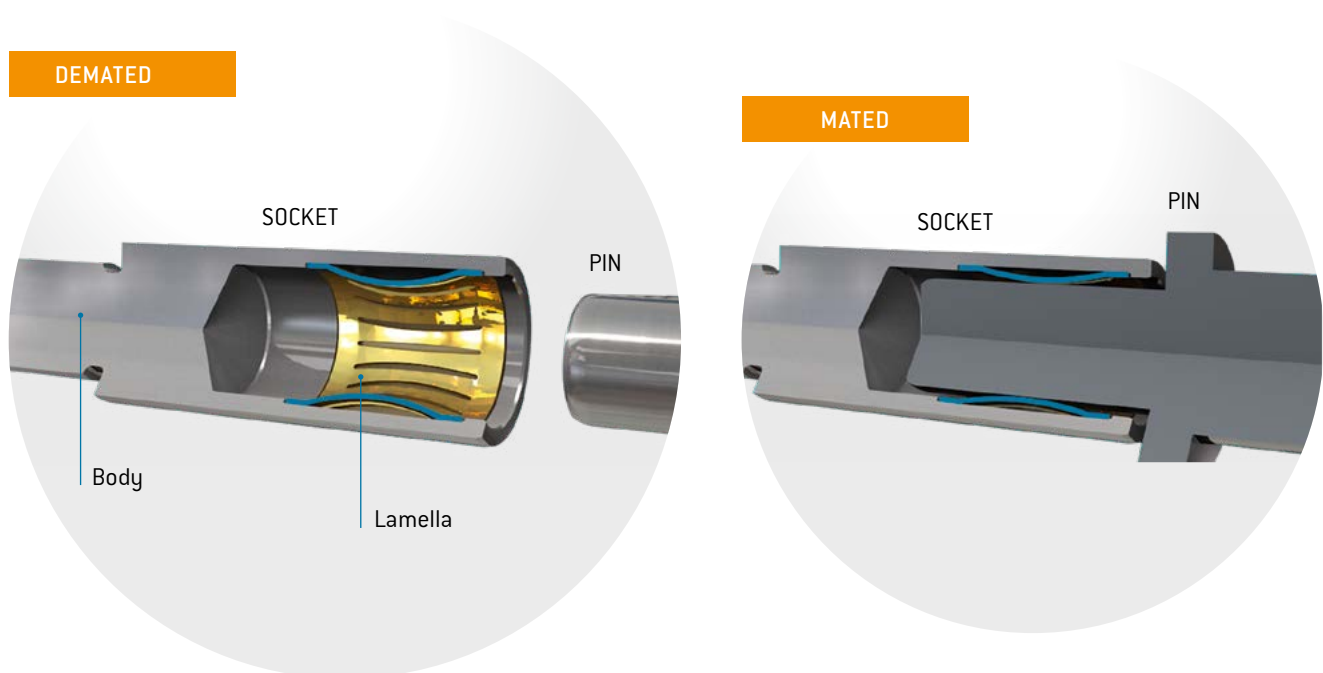
BENEFITS

- Outstanding reliability, lifetime and durability with up to 1 million mating cycles (on request)
- Very high contact security
- Low mating and demating forces
- Very high vibration resistance
- Low contact resistance
- High current-carrying capacity

ODU LAMTAC®

Contacts with lamella technology

The ODU LAMTAC is a high-performance contact system with lamella technology. It possesses high current-carrying capacity and can be used at temperatures of up to 180 °C (on request). It consists of a turned carrier containing one or several stamped lamella belts. The lamella's individual slats make for a multitude of contact points, thereby guaranteeing a high level of contact security and ease of connecting.



BENEFITS

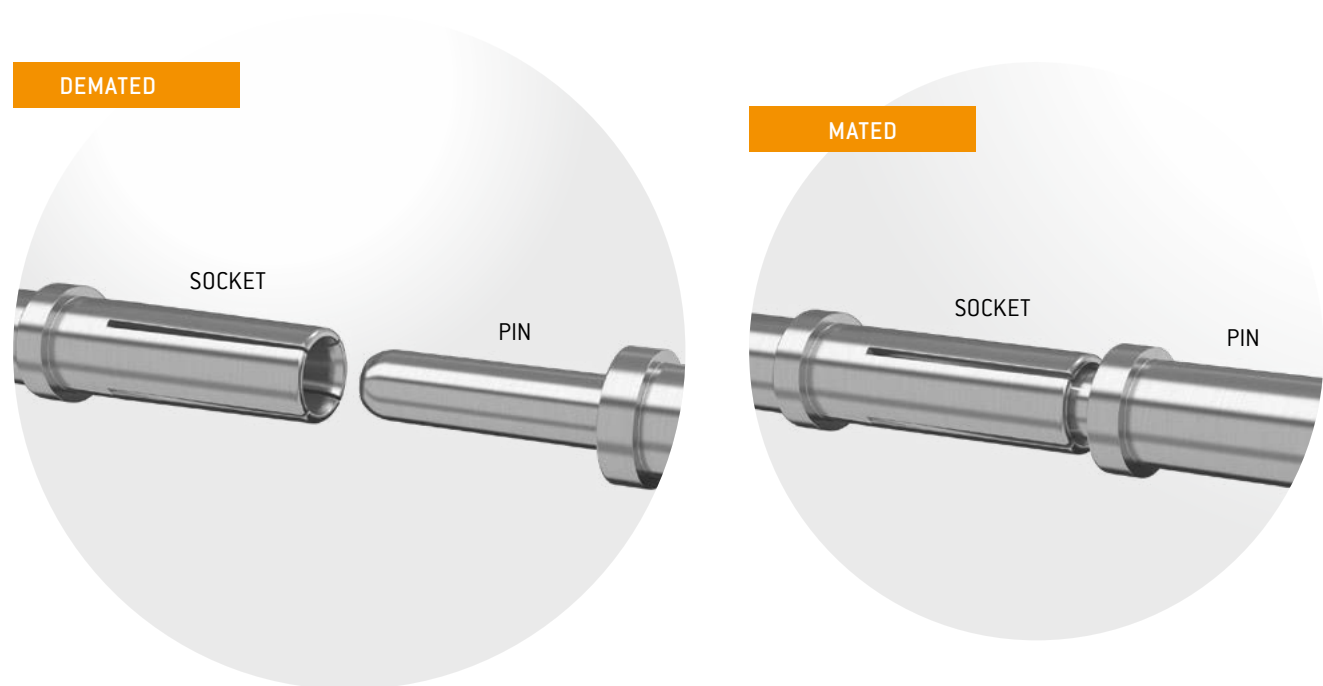
- Current-carrying capacity of up to 2,400 amperes (on request)
- > 10,000 mating cycles
- High vibration resistance
- Low contact resistance
- Automated lamella assembly
- High contact security

ODU TURNTAC®

Slotted contacts

The universal ODU TURNTAC contact system combines the very best contact properties and high quality with economic prices. It has stood the test of even the toughest application areas.

The contact principle can even be used in dimensions as tiny as 0.3 mm in diameter. Depending on the variety of slotted contact, the connector systems offers two or four contact areas.



BENEFITS

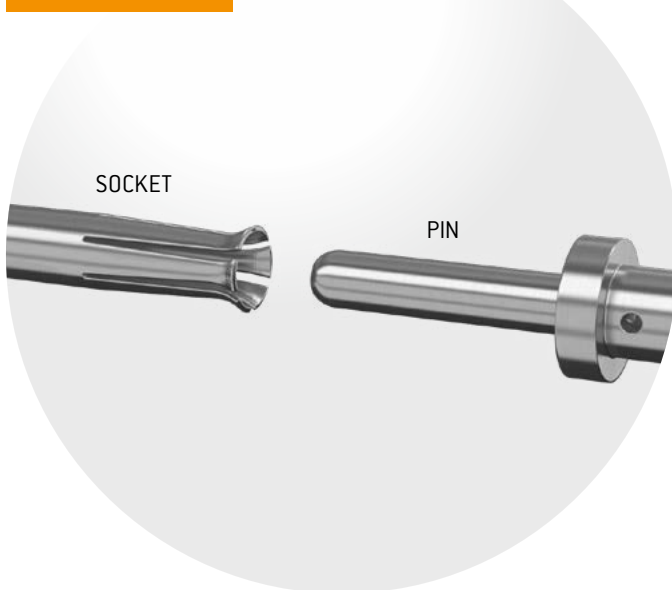
- Turned, slotted contacts
- Rugged contact system, suitable even for harsh environment
- > 10,000 mating cycles
- Low and stable mating and demating forces
- Tiniest dimensions possible, down to 0.3 mm contact diameter (on request)
- Mating possible at an angle of up to 5°

ODU STAMPTAC®

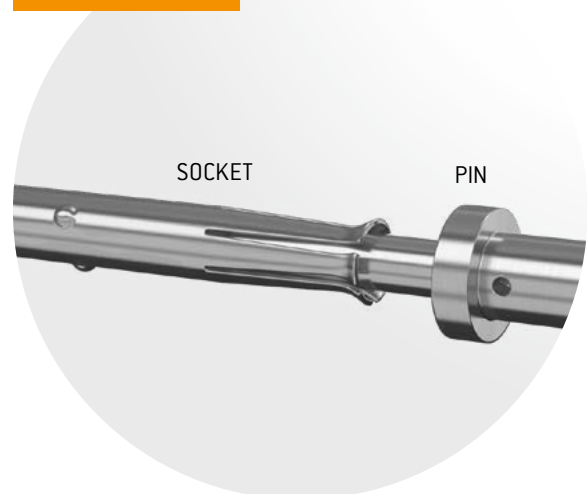
Stamped and formed contacts

ODU STAMPTAC combines optimal contact design with stamping technology. An ideal design for automated processing in large production series, both complex geometries and overall system solutions can be implemented. The specific materials selection, perfectly balanced surface finishing and precise production technologies create the highest level of reliability.

DEMATED



MATED



BENEFITS

- Stamped contacts
- Economical contact systems for automatic processing
- > 10,000 mating cycles
- Standard contacts for use in charging plugs (IP 67)
- Cost-efficient alternative for high volumes



For your individual and economical stamped and formed contact solution, please contact us directly.

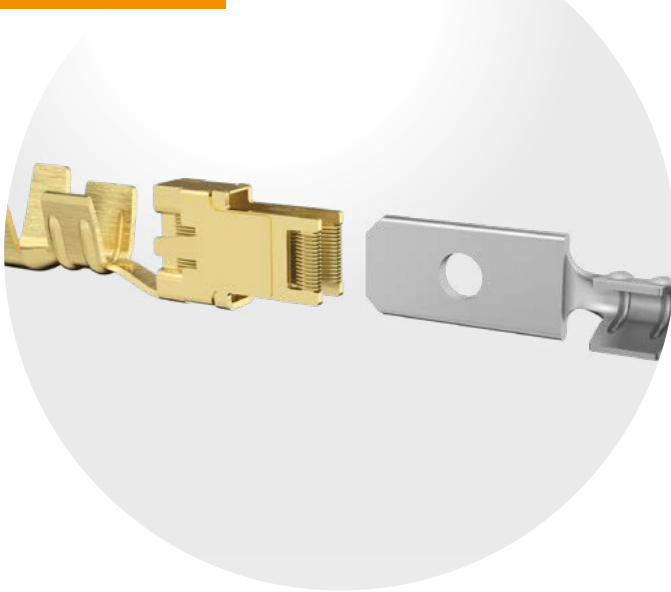
ODU SPRINGTAC® Flatsocket

Flatsockets with springwire technology.

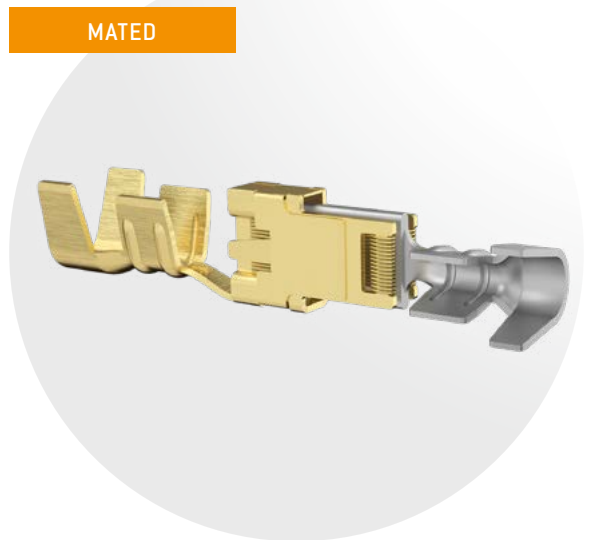
For many components and assemblies, simple low-cost flat contacts or square pins are used. These kinds of connectors have not been created with a focus on a high number of mating cycles, as they are only demated for servicing. But for the quality control during the serial production high mating cycles are needed.

The ODU SPRINGTAC flat socket with springwire technology is the perfect, long-lived counterpart for testing purposes. Its low, stable resistance values make it suitable for sensitive measuring tasks as well as for the testing of high current-carrying capacity.

DEMATED



MATED



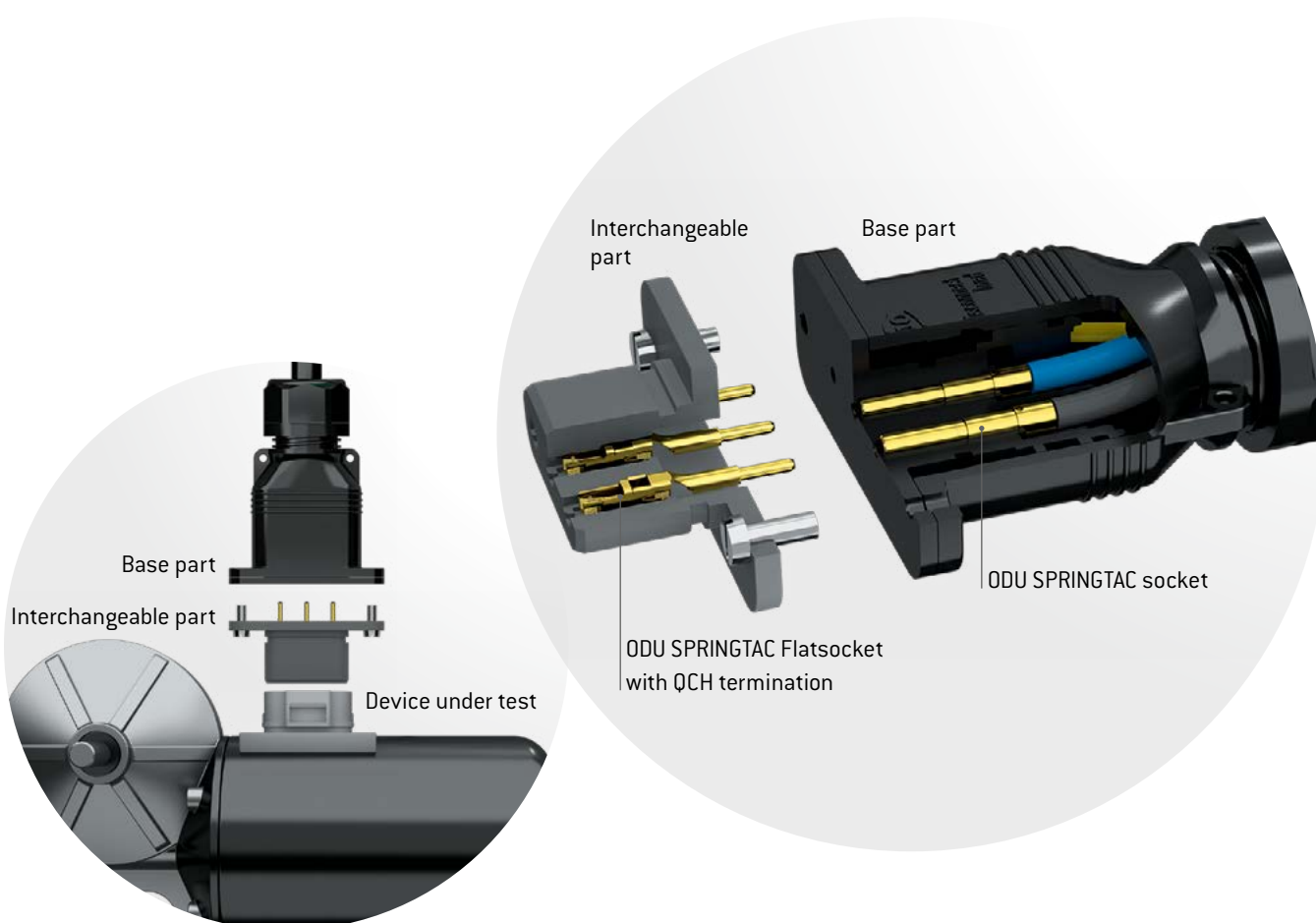
BENEFITS

- Ideal for test adapters
- Optimal contacting for reliable results
- > 50,000 mating cycles
- Versions for 2-point and 4-point measurement (Kelvin measurement)
- Functional ODU quick change head QCH principle

THE ODU QUICK CHANGE HEAD QCH (CONNECTOR SAVER) PRINCIPLE

With the ODU quick change head QCH (connector saver) principle, the socket has a contact pin termination instead of a conventional cable termination. The contact pin can be mated with an ODU SPRINGTAC or ODU LAMTAC socket installed in an assembled connector (base part). Sockets with a QCH termination are integrated in an insulator (interchangeable part) which can be front-mounted to the connector.

This way, you can quickly and easily exchange the test adapter without any further assembly. The use of a wide variety of interchangeable parts provides you with a maximum amount of flexibility for your production.



PROGRESS IN TESTING TECHNOLOGY

Stamped flat contacts (pins) are widely used in automotive electronics and equipment engineering. In standard series connectors, the counterpart consists of stamped sockets crimped to the cables and locked into the insulator. These stamped socket contacts typically allow for only a few mating cycles and are practically unsuitable for testing. This is also because of their often strong mating and demating forces.

ODU SPRINGTAC Flatsockets have been specifically developed for measuring and testing technology. They allow for over 50,000 mating cycles and reliably transmit even very high test currents. Combined with the ODU quick change head QCH (connector saver) principle, many million mating cycles can be achieved.

OVERVIEW ODU ELECTRICAL CONTACTS

ODU Electrical contacts create perfect connections. From simple applications to complex specifications and even in the toughest environmental conditions – our contacts offer ideal solutions. Including the highest level of contact safety and reliability.

Our portfolio includes universal contact varieties with a practical crimp terminal as well as a solder/screw terminal. Our sockets with an external thread allow you to integrate our time-tested contact technology even in the tightest of installation spaces.

Our sockets are ideally complemented with our ODU contact pins for a maximum service life and perfect contacts.

ODU SPRINGTAC® SOCKETS AND PINS

P. 26





ODU SPRINGTAC socket
Solder/screw termination



ODU SPRINGTAC socket
Crimp termination



ODU SPRINGTAC socket
Outer thread



ODU contact pin
Solder/screw termination



ODU contact pin
Crimp termination



Externally flexed contact pin
Solder/screw termination

ODU SPRINGTAC® FLATSOCKETS

P. 34





ODU SPRINGTAC Flatsocket
Crimp termination



ODU SPRINGTAC Flatsocket
Quick change head QCH
(connector saver)



ODU SPRINGTAC Flatsocket
Solder termination

ODU LAMTAC® SOCKETS AND PINS

S. 40



ODU LAMTAC socket
Solder/screw termination



ODU LAMTAC socket
Crimp termination



ODU LAMTAC socket
Outer thread



ODU LAMTAC socket
Outer thread



ODU contact pin
Solder/screw termination



ODU contact pin
Crimp termination

ODU TURNTAC® SOCKETS AND PINS

S. 48



ODU TURNTAC socket
Solder/screw termination



ODU TURNTAC socket
Crimp termination



ODU contact pin
Solder/screw termination



ODU contact pin
Crimp termination

APPLICATION-SPECIFIC SOLUTIONS

When standard solutions reach their limits, it's time to bring in the specialists who can think outside the box to find creative solutions. ODU has experts like this – and they'll put all their focus on your specific needs.

We do more than simply carry out a feasibility test for each development contract. We also closely collaborate with our customers throughout the design process. This way, we can guarantee impressive customized results. Our custom solutions are often based on modifications of standard solutions.

CUSTOMIZED CONNECTORS

The angled ODU pin contact connects a ODU TURNTAC socket, which connects the module block with a battery storage system. The ODU product, which we manufacture right down to the cable assembly, guarantees easy installation, proven current-carrying capability in its lamella technology and touch protection. And provides perfect connections.

Benefits

- Complete solution from one source
- Over 10,000 mating cycles
- Break-Away function



THE CONTACT MAKES THE DIFFERENCE

The universal properties of the ODU TURNTAC typically make it the number one choice for connectors in automation or other industrial applications. Even the smallest of dimensions allow for high contact density. The sophisticated contact technology combined with our surface engineering enable reliable contacting even in the most challenging operating conditions.



CHARGING CONNECTORS

The ODU STAMPTAC is equipped with additional attractive features beyond those of the ODU TURNTAC. These features make it particularly suited for use in chargers. Thanks to the punched-rolled manufacturing method, this contact is ideal for automated processing which is crucial for large quantities. The integrated overmolded three-lip seal guarantees that sealing class IP 67 is met and provides additional efficiency benefits at the same time.



1 MILLION MATING CYCLES

Our ODU SPRINGTAC offers top performance for welding current transmission in a tool-changing system. An intelligent crimp termination system ensures maximum flexibility in the tiniest of installation spaces – as well as one million mating cycles.



HIGH CURRENT-CARRYING CAPACITY COMBINED WITH HIGH TEMPERATURE RESISTANCE

The time-tested ODU LAMTAC series has been combined with a stamped contact body.

Benefits

- Efficient stamping technique
- Automated assembly
- 100 % final check

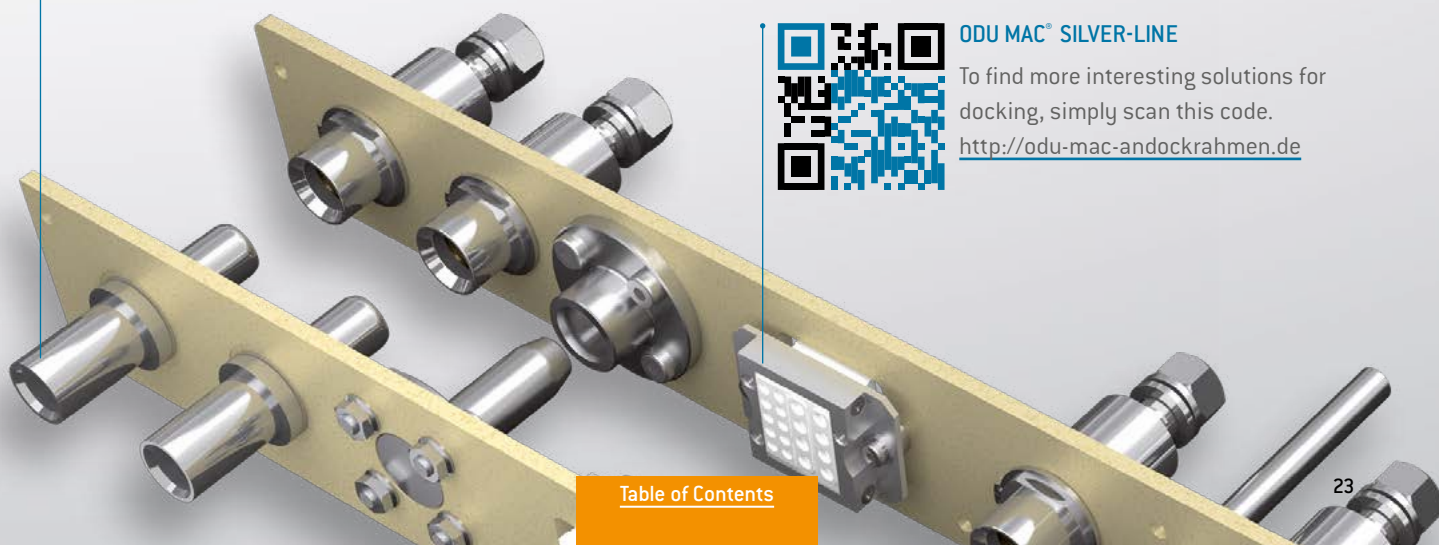


ODU LAMTAC® ON THE TEST BENCH

The reliable transmission of high performance under climate changing conditions demand high requirements to the contact system and connection technology. ODU LAMTAC combines this in this docking solution in an extraordinary way.

Benefits

- System solution from a single source
- Low coupling forces
- Temperature stable connection



ODU MAC® SILVER-LINE

To find more interesting solutions for docking, simply scan this code.
<http://odu-mac-andockrahmen.de>



ODU ELECTRICAL CONTACTS

[Table of Contents](#)

ODU SPRINGTAC®

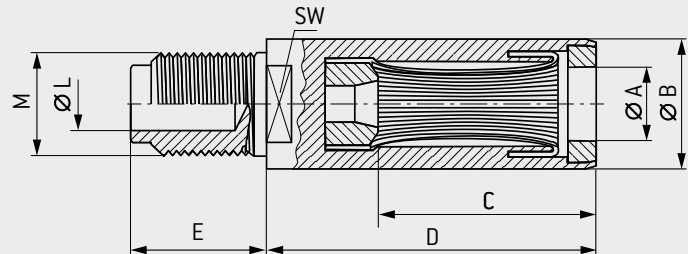
ODU SPRINGTAC socket with solder/screw termination	26
ODU SPRINGTAC socket with crimp termination	27
ODU SPRINGTAC socket with outer thread	28
ODU contact pin with solder/screw termination	29
ODU contact pin with crimp termination	30
ODU SPRINGTAC externally flexed contact pin with solder/screw termination	31

ODU SPRINGTAC® SOCKET



Contact with springwire technology

SOLDER/SCREW TERMINATION



Part number	Dimensions								Mechanical data ¹		Electrical data ¹			
	Ø A	Ø B	C	D	SW	E	M	Ø L	Mating force	Demating force	Nominal current	Max. continuous current	Surge current	Contact resistance
	mm	mm	mm	mm	mm	mm	Thread	mm	N	N	A	A	kA	μΩ
170.106.100.201.000	1.5	4	12	15.5	—	12.5	M2.6	1.25	5	3	25	35	1.5	500
170.107.100.201.000	2	4	12	15.5	—	12.5	M3	1.8	6	4	30	45	2.5	400
170.109.100.201.000	2.5	6	12	15.5	5	12.5	M3	1.8	8	5	30	45	3	300
170.110.100.201.000	3	7	15	22.5	5	15	M4	2.3	10	7	40	65	4	250
170.111.100.201.000	4	8	15	22.5	6	19	M5	3	15	10	55	80	7	210
170.112.100.201.000	5	9	15	22.5	7	19	M5	3	18	12	75	115	10	200
170.113.100.201.000	6	11	24	33.5	8	22	M6	3.6	20	13	100	145	13	180
170.115.100.201.000	8	14	24	33.5	11	26	M8	4.8	25	15	140	200	18	160
170.117.100.201.000	10	16	24	33.5	12	30	M10	6.2	30	20	175	260	25	150
170.119.100.201.000	12	18	36	47	14	34	M12 × 1.5	7.6	35	25	230	340	34	140
170.121.100.201.000	16	23	36	47	19	42	M16 × 1.5	11.5	45	35	340	460	50	130
170.123.100.201.000	20	27	48	66	22	50	M20 × 2	14.5	55	45	450	600	70	115
170.125.100.201.000	24	32	48	66	27	58	M24 × 2	17.8	70	55	500	700	90	105
170.127.100.201.000	28	36	48	66	32	62	M32 × 2	25	90	65	650	850	110	90
170.128.100.201.000	30	38	48	66	32	62	M32 × 2	25	100	70	720	950	120	80

Other variants, sizes and finishes available on request.

¹ See "Technical Information" starting on page 63.

TECHNICAL DATA

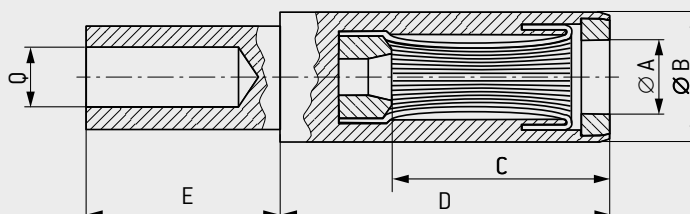
- Suitable for contact pins (page 29 and 30)
- Tightening torque see page 59
- Suitable for screwing to power busbars, backplanes and contact blocks
- Cables with lugs can be easily connected
- Cables can be soldered into the solder hole

ODU SPRINGTAC® SOCKET

Contact with springwire technology



CRIMP TERMINATION



Part number	Dimensions						Mechanical data ¹		Electrical data ¹			
	Ø A	Ø B	C	D	E	Q	Mating force	Demating force	Nominal current	Max. continuous current	Surge current	Contact resistance
	mm	mm	mm	mm	mm	mm ²	N	N	A	A	kA	μΩ
170.361.700.207.000	0.76	1.58	7	9.8	5	0.38	1.5	1	10	15	0.7	3,000
170.362.700.207.000	1.02	1.98	7	9.8	5	0.5	2	1.5	12	18	1	2,000
171.606.100.201.000	1.5	4	12	15.5	6.5	1.5	5	3	25	35	1.5	500
171.607.100.201.000	2	4	12	15.5	6.5	2.5	6	4	30	45	2.5	400
171.609.100.201.000	2.5	6	12	15.5	6.5	2.5	8	5	30	45	3	250
170.610.100.201.000	3	5.5	15	22.5	6.5	2.5	10	7	30	45	4	220
171.610.100.201.000	3	7	15	22.5	6.5	4	10	7	40	65	4	220
170.611.100.201.000	4	8	15	22.5	12.5	4	15	10	40	65	4	210
171.611.100.201.000	4	8	15	22.5	12.5	6	15	10	55	80	7	210
171.612.100.201.000	5	9	15	22.5	17.5	10	18	12	75	115	10	200
171.613.100.201.000	6	11	24	33.5	22.5	16	20	13	100	145	13	180
171.615.100.201.000	8	14	24	33.5	22.5	25	25	15	140	200	18	160
171.617.100.201.000	10	16	24	33.5	22.5	35	30	20	175	260	25	150
171.619.100.201.000	12	18	36	47	28	50	35	25	230	340	34	140
171.621.100.201.000	16	23	36	47	28	95	45	35	340	460	50	130

Other variants, sizes and finishes available on request.

¹ See "Technical Information" starting on page 63.

TECHNICAL DATA

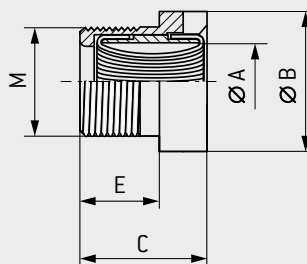
- Suitable for contact pins (page 29 and 30)
- Easy and quick connection by crimping (crimp information starting on page 54)
- Suitable for connecting harmonized cables
- Part number crimping tool see table on page 52

ODU SPRINGTAC® SOCKET



Contact with springwire technology

OUTER THREAD



Part number	Dimensions					Mechanical data ¹			Electrical data ¹			
	Ø A	Ø B	C	E	M	Mating force	Demating force	Tightening torque	Nominal current	Max. continuous current	Surge current	Contact resistance
	mm	mm	mm	mm	Thread	N	N	Nm	A	A	kA	μΩ
174.011.000.201.000	4	9	8	5	M7 × 0.5	15	10	1.2	45	80	7	320

Other variants, sizes and finishes available on request.

¹ See "Technical Information" starting on page 63.

TECHNICAL DATA

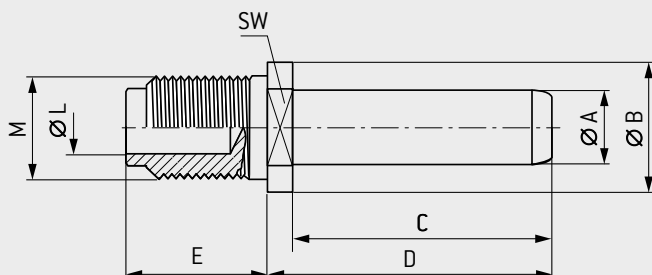
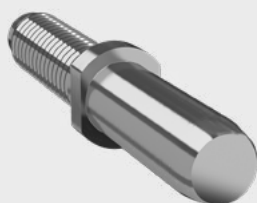
- Suitable for contact pins (page 29 and 30)
- Suitable for screwing to power busbars, backplanes and contact blocks
- Can be connected at both ends

ODU CONTACT PIN

For all ODU SPRINGTAC® sockets



SOLDER/SCREW TERMINATION



Part number	Dimensions								
	Ø A	x ¹	Ø B	C	D	SW	E	M	Ø L
	mm	mm	mm	mm	mm	mm	mm	Thread	mm
181.106.000.301.000	1.5	-0.03	4	10	11.5	3	10	M2.6	1.25
181.107.000.301.000	2	-0.03	5	10	11.5	4	12.5	M3	1.8
181.109.000.301.000	2.5	-0.03	5	10	11.5	4	12.5	M3	1.8
181.110.000.301.000	3	-0.03	6	14	15.5	5	15	M4	2.3
181.111.000.301.000	4	-0.03	7	14	16	6	19	M5	3
181.112.000.301.000	5	-0.03	7	14	16	6	19	M5	3
181.113.000.301.000	6	-0.03	8	23	26	7	22	M6	3.6
181.213.000.301.000	6	-0.03	11	23	26	8	22	M8	4.8
181.115.000.301.000	8	-0.03	11	23	26	9	26	M8	4.8
181.215.000.301.000	8	-0.03	14	23	26	11	26	M10	6.2
181.117.000.301.000	10	-0.04	16	23	26	12	30	M10	6.2
181.217.000.301.000	10	-0.04	16	23	26	12	30	M12 × 1.5	7.6
181.119.000.301.000	12	-0.04	16	34	38	14	34	M12 × 1.5	7.6
181.121.000.301.000	16	-0.04	20	34	38	17	42	M16 × 1.5	11.5
181.123.000.301.000	20	-0.04	25	46	51	22	50	M20 × 2	14.5
181.125.000.301.000	24	-0.04	30	46	51	27	58	M24 × 2	17.8
181.127.000.301.000	28	-0.04	36	46	52	32	62	M32 × 2	25
181.128.000.301.000	30	-0.04	38	46	52	32	62	M32 × 2	25

Other variants, sizes and finishes available on request.

¹ Tolerance diameter A.

TECHNICAL DATA

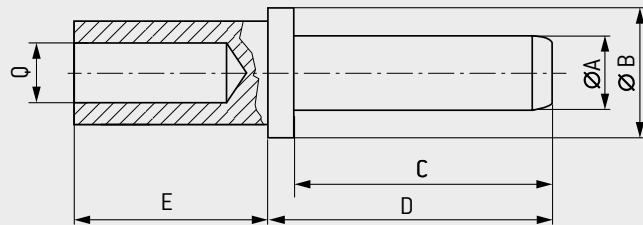
- Suitable for all round ODU SPRINGTAC sockets
- Tightening torque see page 59
- Suitable for screwing to power busbars, backplanes and contact blocks
- Cables with lugs can be easily connected
- Cables can be soldered into the solder hole

ODU CONTACT PIN



For all ODU SPRINGTAC® sockets

CRIMP TERMINATION



Part number	Dimensions						
	Ø A	x ¹	Ø B	C	D	E	Q
	mm	mm	mm	mm	mm	mm	mm ²
180.361.000.307.000	0.765	-0.015	1.57	7	16.9	4.9	0.38
180.362.000.307.000	1.02	-0.03	2.1	7	16.9	4.9	0.5
181.606.000.301.000	1.5	-0.03	4	10	11.5	6.5	1.5
181.607.000.301.000	2	-0.03	4	10	11.5	6.5	2.5
181.609.000.301.000	2.5	-0.03	6	10	11.5	6.5	2.5
181.610.000.301.000	3	-0.03	7	14	16	6.5	4
181.611.000.301.000	4	-0.03	8	14	16	12.5	6
181.612.000.301.000	5	-0.03	9	14	16	17.5	10
181.613.000.301.000	6	-0.03	11	23	26	22.5	16
181.713.000.301.000	6	-0.03	11	23	26	22.5	25
181.615.000.301.000	8	-0.03	14	23	26	22.5	25
181.715.000.301.000	8	-0.03	14	23	26	22.5	35
181.617.000.301.000	10	-0.04	16	23	26	22.5	35
181.717.000.301.000	10	-0.04	16	23	26	22.5	50
181.619.000.301.000	12	-0.04	18	34	38	28	50
181.621.000.301.000	16	-0.04	23	34	38	28	95

Other variants, sizes and finishes available on request.

¹ Tolerance diameter A.

TECHNICAL DATA

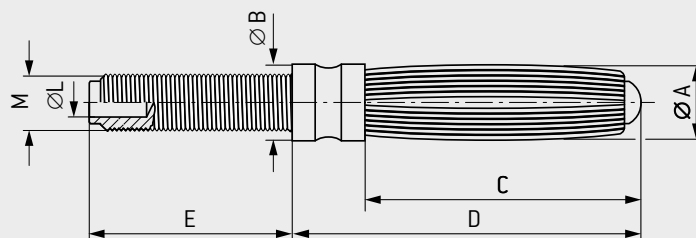
- Suitable for all round ODU SPRINGTAC sockets
- Easy and quick termination by crimping (crimp information starting on page [54](#))
- Suitable for connecting harmonized cables
- Part number crimping tool see table on page [57](#)

EXTERNALLY FLEXED CONTACT PIN

Contact with springwire technology



SOLDER/SCREW TERMINATION



Part number	Dimensions							Mechanical data ¹		Electrical data ¹		
	Ø A	Ø B	C	D	E	M	Ø L	Mating force	Demating force	Nominal current	Max. continuous current	Contact resistance
	mm	mm	mm	mm	mm	Thread	mm	N	N	A	A	µΩ
150.001.100.201.000	1.5	3	6	11.2	8	M2.3	1.25	2	2	10	15	800
150.002.100.201.000	2	3	9	14.1	9	M2.3	1.25	4	3	15	18	675
150.005.100.201.000	3	3.5	13	18.5	11.5	M2.6	1.4	6	5	25	35	600
150.006.100.201.000	4	5	20.5	26	13	M3	1.8	10	8	36	50	525
150.007.100.201.000	5	6	20.5	26	15	M4	2.4	15	12	45	65	475
150.008.100.201.000	6	7	22	29.1	17	M5	3.2	19	14	55	80	425
150.009.100.201.000	7	8	22	29	17	M6	4	21	16	65	100	375
150.010.100.201.000	8	9	33	41.5	19	M6	4	24	18	78	130	325
150.011.100.201.000	9	10.5	33	41.5	20.5	M8	5.2	28	22	90	150	275
150.012.100.201.000	10	11.5	33	41.5	22	M8	5.2	32	25	104	175	250
150.013.100.201.000	12	14	33	41.5	25	M10	6.5	38	30	135	215	200
150.015.100.201.000	16	18	45	59	32	M14 × 1.5	9.5	50	40	175	270	165

Other variants, sizes and finishes available on request.

¹ See "Technical Information" starting on page [63](#).

TECHNICAL DATA

- Suitable for contact holes Ø A H9
- Tightening torque see page [59](#)
- Cables with lugs can be easily connected
- Cables can be soldered into the solder hole



ODU ELECTRICAL CONTACTS



ODU SPRINGTAC® FLATSOCKETS

ODU SPRINGTAC Flatsocket for 2-point measurement, with crimp termination	<u>34</u>
ODU SPRINGTAC Flatsocket for 2-point measurement, quick change head QCH (connector saver)	<u>35</u>
ODU SPRINGTAC Flatsocket for 4-point measurement (Kelvin measurement), with solder termination	<u>36</u>

ODU SPRINGTAC® FLATSOCKET

For 2-point measurement

Flatsocket with springwire technology



CRIMP TERMINATION

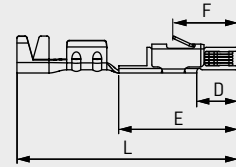
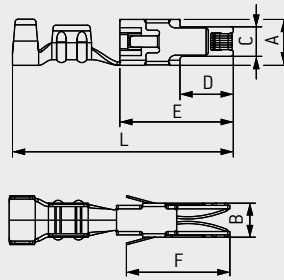
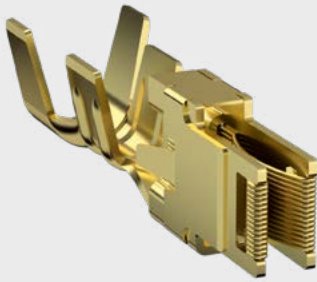


Illustration applies to part number
190.222 000

Part number	Surface	For pin	Termination in mm ²	Dimensions								Mechanical data ¹		Electrical data ¹		
				A	B	C	D	E	F	L		Mating force	Demating force	Nominal current	Max. continuous current	Contact resistance
190.222.700.201.000	Ag	0.64 × 0.64	0.25 – 0.5	1.8	1.85	1.4	2	5.6	4	13.7		1.5 ± 1	1 ± 0.6	7	9	7.5
190.222.700.207.000	Au															
190.218.100.201.000	Ag	1.6 × 0.6	0.5 – 1	2.6	2.2	1.35	4.3	10	8.3	19.5		2 ± 1.5	1.5 ± 1	13	18	2.7
190.218.700.207.000	Au	1.6 × 0.8														
190.214.100.201.000	Ag	2.8 × 0.8	1 – 1.5	4	3	2.6	4.7	10	9.2	19.5		4 ± 2	3 ± 2	16	22	2
190.214.700.207.000	Au															
190.215.100.201.000	Ag	4.8 × 0.8	1.5 – 2.5	6.8	3	4.8	6	11	10.5	20.5		6 ± 2	5 ± 2	22	30	1.3
190.215.700.207.000	Au	6.3 × 0.8														
190.216.100.201.000	Ag	4.8 × 0.8	4	6.8	3	4.8	6	11	10.5	24.5		6 ± 2	5 ± 2	27	36	1.3
190.216.700.207.000	Au	6.3 × 0.8														

Other variants, sizes and finishes available on request.

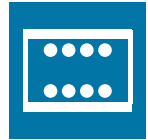
¹ See "Technical Information" starting on page [63](#).

TECHNICAL DATA

- High current-carrying capacity
- Ideal for test adapters
- > 50.000 mating cycles
- Part number crimping tool see table on page [59](#)
- Chamber dimensions on page [70](#)

ODU SPRINGTAC® FLATSOCKET

For 2-point measurement
Flatsocket with springwire technology



ODU QCH (QUICK CHANGE HEAD)

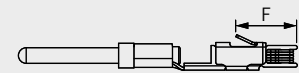
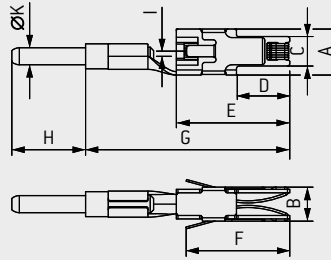
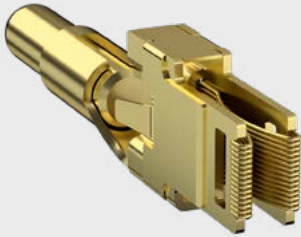


Illustration applies to part number
190.242 ... 000

Part number	Surface	For pin	Dimensions									Ø K	Mechanical data ¹		Electrical data ¹		
			A	B	C	D	E	F	G	H	I		Mating force	Demating force	Nominal current	Max. continuous current	Contact resistance
190.242.700.201.000	Ag	0.64 × 0.64	1.8	1.85	1.4	2	5.6	4	11.5	6.5	0 ± 0.15	1.02	1.5 ± 1	1 ± 0.6	7	9	7.5
190.242.700.207.000	Au																
190.238.100.201.000	Ag	1.6 × 0.6	2.6	2.2	1.35	4.3	10	8.3	18	6.5	0 ± 0.3	1.02	2 ± 1.5	1.5 ± 1	11	16	2.7
190.238.700.207.000	Au	1.6 × 0.8															
190.234.100.201.000	Ag	2.8 × 0.8	4	3	2.6	4.7	10	9.2	18	6.5	1 ± 0.5	1.5	4 ± 2	3 ± 2	16	22	2
190.234.700.207.000	Au																
190.235.100.201.000	Ag	4.8 × 0.8	6.8	3	4.8	6	11	10.5	20.5	6.5	1 ± 0.5	3	6 ± 2	5 ± 2	27	36	1.3
190.235.700.207.000	Au	6.3 × 0.8															

Other variants, sizes and finishes available on request.

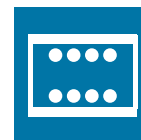
¹ See "Technical Information" starting on page 63.

TECHNICAL DATA

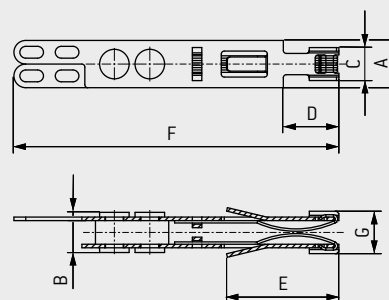
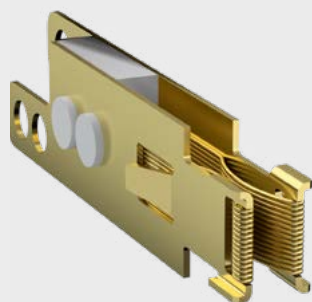
- With circular termination pin, suitable for all ODU sockets
- Ideal for test adapters and replacement inserts
- > 50,000 mating cycles
- Chamber dimensions on page 70

ODU SPRINGTAC® FLATSOCKET

For 4-point measurement (Kelvin measurement)
Flatsocket with springwire technology



SOLDER TERMINATION



Part number	Surface	Size	For pin	Termination in mm ²	Dimensions								Mechanical data ¹		Electrical data ¹		
					A	B	C	D	E	F	G		Mating force	Demating force	Nominal current	Max. continuous current	Contact resistance
190.224.100.201.000	Ag	1	2.8 × 0.8	Solder 1.5	4	3.4	2.6	4.7	9.5	27.5	3.6		4 ± 2	3 ± 2	7	12	2
190.224.700.207.000	Au																
190.225.100.201.000	Ag	2	4.8 × 0.8 6.3 × 0.8	Solder 2.5	6.8	3.4	4.8	6	10.5	27.5	3.6		6 ± 2	5 ± 2	12	17	2
190.225.700.207.000	Au																

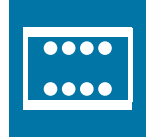
Other variants, sizes and finishes available on request.

¹ See "Technical Information" starting on page 63.

TECHNICAL DATA

- For precise measuring of low electric resistances
- Mutually insulated termination for current and voltage path
- Ideal for test adapters
- > 50,000 mating cycles
- Chamber dimensions on page 70

FOR YOUR NOTES





ODU ELECTRICAL CONTACTS

[Table of Contents](#)



ODU LAMTAC®

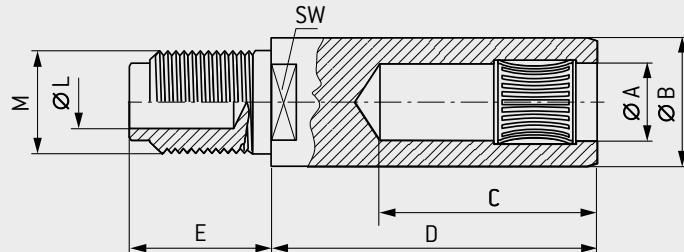
ODU LAMTAC socket with solder/screw termination	40
ODU LAMTAC socket with crimp termination	41
ODU LAMTAC socket with outer thread	42
ODU contact pin with solder/screw termination	44
ODU contact pin with crimp termination	45

ODU LAMTAC® Socket



Contact with lamella technology

SOLDER/SCREW TERMINATION



Part number	Dimensions								Mechanical data ¹		Electrical data ¹			
	Ø A	Ø B	C	D	SW	E	M	Ø L	Mating force	Demating force	Nominal current	Max. continuous current	Surge current	Contact resistance
	mm	mm	mm	mm	mm	mm	Thread	mm	N	N	A	A	kA	µΩ
178.106.100.201.000	1.5	4	10.5	15.5	—	12.5	M2.6	1.25	4	3	25	40	2	450
178.107.100.201.000	2	4	10.5	15.5	—	12.5	M3	1.8	6	5	30	55	2.5	400
178.110.100.201.000	3	7	15	22.5	5	15	M4	2.3	8	8	40	75	5	350
178.111.100.201.000	4	8	15	22.5	6	19	M5	3	10	10	55	95	8	300
178.112.100.201.000	5	9	18.5	22.5	7	19	M5	3	15	13	75	130	12	250
178.113.100.201.000	6	11	24	33.5	8	22	M6	3.6	20	15	100	190	19	170
178.213.100.201.000	6	11	24	33.5	8	26	M8	4.8	20	15	130	225	19	170
178.115.100.201.000	8	14	24	33.5	11	26	M8	4.8	25	20	140	250	26	120
178.215.100.201.000	8	14	24	33.5	11	30	M10	6.2	25	20	160	290	26	120
178.117.100.201.000	10	16	24	33.5	12	30	M10	6.2	30	25	175	300	27	100
178.217.100.201.000	10	16	24	33.5	12	34	M12 × 1.5	7.6	30	25	185	310	27	100
178.119.100.201.000	12	18	36	47	14	34	M12 × 1.5	7.6	30	25	190	340	35	80
178.121.100.201.000	16	23	36	47	19	42	M16 × 1.5	11.5	35	30	340	550	48	70
178.123.100.201.000	20	27	48	66	22	50	M20 × 2	14.5	40	35	450	700	56	50
178.125.100.201.000	24	32	48	66	27	58	M24 × 2	17.8	45	40	510	900	62	40
178.127.100.201.000	28	36	48	66	32	62	M32 × 2	25	50	45	840	1,450	68	30
178.128.100.201.000	30	38	48	66	32	62	M32 × 2	25	55	50	910	1,570	70	25

Other variants, sizes and finishes available on request.

¹ See "Technical Information" starting on page 63.

TECHNICAL DATA

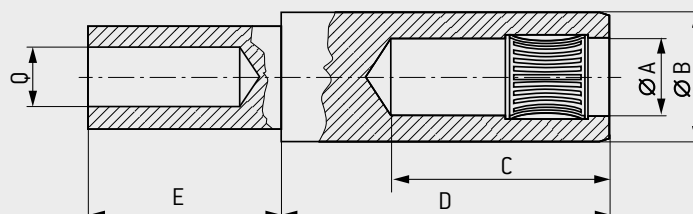
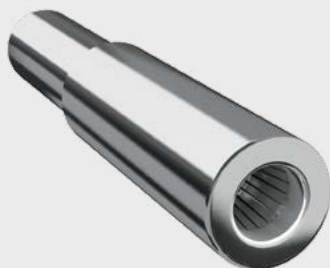
- Suitable for contact pins (page 44 and 45)
- Tightening torque see page 59
- Suitable for screwing to power busbars, backplanes and contact blocks
- Cables with lugs can be easily connected
- Cables can be soldered into the solder hole

ODU LAMTAC® Socket

Contact with lamella technology



CRIMP TERMINATION



Part number	Dimensions						Mechanical data ¹		Electrical data ¹			
	Ø A	Ø B	C	D	E	Q	Mating force	Demating force	Nominal current	Max. continuous current	Surge current	Contact resistance
	mm	mm	mm	mm	mm	mm ²	N	N	A	A	kA	μΩ
178.606.100.201.000	1.5	4	10.5	15.5	6.5	1.5	4	3	25	40	2	450
178.607.100.201.000	2	4	10.5	15.5	6.5	2.5	6	5	30	55	2.5	400
178.610.100.201.000	3	7	15	22.5	6.5	4	8	8	40	75	5	350
178.611.100.201.000	4	8	15	22.5	12.5	6	10	10	55	95	8	300
178.612.100.201.000	5	9	18.5	22.5	17.5	10	15	13	75	130	12	250
178.613.100.201.000	6	11	24	33.5	22.5	16	20	15	100	190	19	170
178.713.100.201.000	6	11	24	33.5	22.5	25	20	15	130	225	19	170
178.615.100.201.000	8	14	24	33.5	22.5	25	25	20	140	250	26	120
178.715.100.201.000	8	14	24	33.5	22.5	35	25	20	160	290	26	120
178.617.100.201.000	10	16	24	33.5	22.5	35	30	25	175	300	27	100
178.717.100.201.000	10	16	24	33.5	22.5	50	30	25	185	310	27	100
178.619.100.201.000	12	18	36	47	28	50	30	25	190	340	35	80
178.621.100.201.000	16	23	36	47	28	95	35	30	340	550	48	70

Other variants, sizes and finishes available on request.

¹ See "Technical Information" starting on page 63.

TECHNICAL DATA

- Suitable for contact pins (page 44 and 45)
- Easy and quick termination by crimping (crimp information see page 54)
- Suitable for connecting harmonized cables
- Part number crimping tool see table on page 57

ODU LAMTAC® SOCKET



Contact with lamella technology

OUTER THREAD

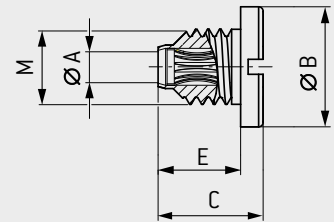
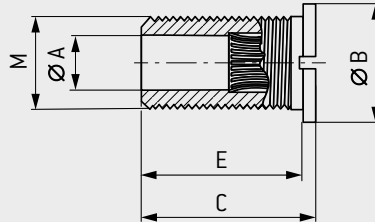
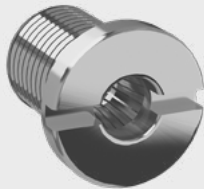


Illustration applies to part number
178.34 000

Part number	Dimensions					Mechanical data ¹			Electrical data ¹			
	Ø A mm	Ø B mm	C mm	E mm	M Thread	Mating force N	Demating force N	Tightening torque Nm	Nominal current A	Max. continuous current A	Surge current kA	Contact resistance μΩ
178.346.100.201.000	1.5	7	7	5.5	M4	4	3	0.5	25	40	2	350
178.347.100.201.000	2	8	7	5.5	M5	6	5	0.5	30	55	2.5	300
178.350.100.201.000	3	10	12	10	M7 × 0.5	8	8	1.2	40	75	5	190
178.351.100.201.000	4	11	13	10	M8 × 1	10	10	1.2	55	95	8	170
178.352.100.201.000	5	13	13	10	M10	15	13	3	75	130	12	150
178.355.100.201.000	6	16	19	16	M12 × 1.5	20	15	6	100	190	19	110
178.356.100.201.000	8	18	19	16	M14 × 1.5	25	20	6	140	250	26	80
178.358.100.201.000	10	22	19	16	M18 × 1.5	30	25	10	175	300	27	60

Other variants, sizes and finishes available on request.

¹ See "Technical Information" starting on page 63.

TECHNICAL DATA

- Suitable for contact pins (page 44 and 45)
- Suitable for screwing to power busbars, backplanes and contact blocks

ODU LAMTAC® SOCKET



Contact with lamella technology

OUTER THREAD

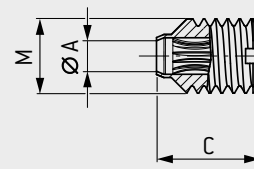
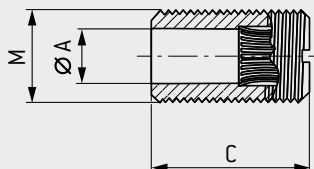


Illustration applies to part number
178.30 000

Part number	Dimensions			Mechanical data ¹			Electrical data ¹			
	Ø A	C	M	Mating force	Demating force	Tightening torque	Nominal current	Max. continuous current	Surge current	Contact resistance
	mm	mm	Thread	N	N	Nm	A	A	kA	μΩ
178.306.100.201.000	1.5	7	M4	4	3	0.5	25	40	2	350
178.307.100.201.000	2	7	M5	6	5	0.5	30	55	2.5	300
178.310.100.201.000	3	12	M7 × 0.5	8	8	1.2	40	75	5	190
178.311.100.201.000	4	13	M8 × 1	10	10	1.2	55	95	8	170
178.312.100.201.000	5	13	M10	15	13	3	75	130	12	150
178.314.100.201.000	6	19	M12 × 1.5	20	15	6	100	190	19	110
178.315.100.201.000	8	19	M14 × 1.5	25	20	6	140	250	26	80
178.318.100.201.000	10	19	M18 × 1.5	30	25	10	175	300	27	60

Other variants, sizes and finishes available on request.

¹ See "Technical Information" starting on page 63.

TECHNICAL DATA

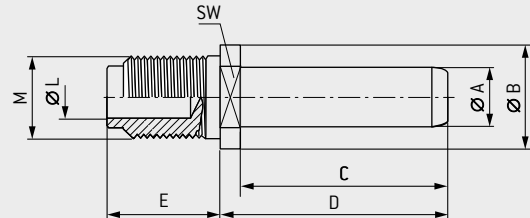
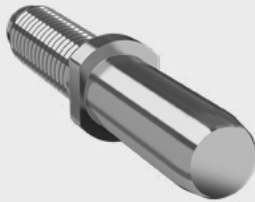
- Suitable for contact pins (page 44 and 45)
- Suitable for screwing to power busbars, backplanes and contact blocks

ODU CONTACT PIN

For all ODU LAMTAC® sockets



SOLDER/SCREW TERMINATION



Part number	Dimensions								
	Ø A	x ¹	Ø B	C	D	SW	E	M	Ø L
	mm	mm	mm	mm	mm	mm	mm	Thread	mm
181.106.000.301.000	1.5	-0.03	4	10	11.5	3	10	M2.6	1.25
181.107.000.301.000	2	-0.03	5	10	11.5	4	12.5	M3	1.8
181.109.000.301.000	2.5	-0.03	5	10	11.5	4	12.5	M3	1.8
181.110.000.301.000	3	-0.03	6	14	15.5	5	15	M4	2.3
181.111.000.301.000	4	-0.03	7	14	16	6	19	M5	3
181.212.000.301.000	5	-0.03	7	17.5	19.5	6	19	M5	3
181.113.000.301.000	6	-0.03	8	23	26	7	22	M6	3.6
181.213.000.301.000	6	-0.03	11	23	26	8	22	M8	4.8
181.115.000.301.000	8	-0.03	11	23	26	9	26	M8	4.8
181.215.000.301.000	8	-0.03	14	23	26	11	26	M10	6.2
181.117.000.301.000	10	-0.04	16	23	26	12	30	M10	6.2
181.217.000.301.000	10	-0.04	16	23	26	12	30	M12 × 1.5	7.6
181.119.000.301.000	12	-0.04	16	34	38	14	34	M12 × 1.5	7.6
181.121.000.301.000	16	-0.04	20	34	38	17	42	M16 × 1.5	11.5
181.123.000.301.000	20	-0.04	25	46	51	22	50	M20 × 2	14.5
181.125.000.301.000	24	-0.04	30	46	51	27	58	M24 × 2	17.8
181.127.000.301.000	28	-0.04	36	46	52	32	62	M32 × 2	25
181.128.000.301.000	30	-0.04	38	46	52	32	62	M32 × 2	25

Other variants, sizes and finishes available on request.

¹ Tolerance diameter A.

TECHNICAL DATA

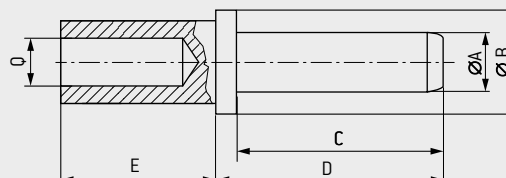
- Suitable for round ODU LAMTAC sockets
- Tightening torque see page 59
- Suitable for screwing to power busbars, backplanes and contact blocks
- Cables with lugs can be easily connected
- Cables can be soldered into the solder hole

ODU CONTACT PIN

For all ODU LAMTAC® sockets



CRIMP TERMINATION



Part number	Dimensions						
	Ø A	x ¹	Ø B	C	D	E	Q
	mm	mm	mm	mm	mm	mm	mm ²
181.606.000.301.000	1.5	-0.03	4	10	11.5	6.5	1.5
181.607.000.301.000	2	-0.03	4	10	11.5	6.5	2.5
181.609.000.301.000	2.5	-0.03	6	10	11.5	6.5	2.5
181.610.000.301.000	3	-0.03	7	14	16	6.5	4
181.611.000.301.000	4	-0.03	8	14	16	12.5	6
181.712.000.301.000	5	-0.03	9	17.5	19.5	17.5	10
181.613.000.301.000	6	-0.03	11	23	26	22.5	16
181.713.000.301.000	6	-0.03	11	23	26	22.5	25
181.615.000.301.000	8	-0.03	14	23	26	22.5	25
181.715.000.301.000	8	-0.03	14	23	26	22.5	35
181.617.000.301.000	10	-0.04	16	23	26	22.5	35
181.717.000.301.000	10	-0.04	16	23	26	22.5	50
181.619.000.301.000	12	-0.04	18	34	38	28	50
181.621.000.301.000	16	-0.04	23	34	38	28	95

Other variants, sizes and finishes available on request.

¹ Tolerance diameter A.

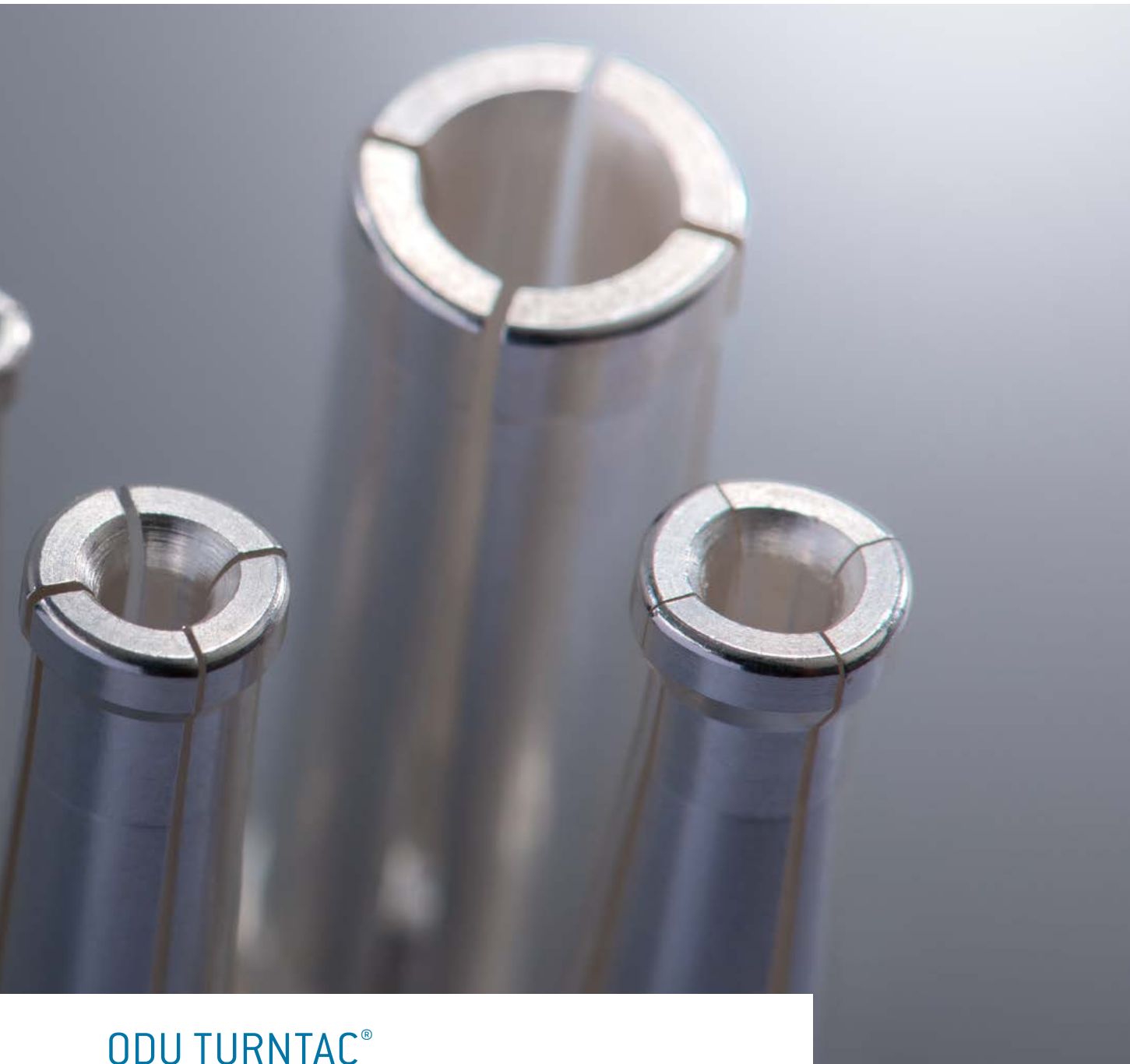
TECHNICAL DATA

- Suitable for round ODU LAMTAC sockets
- Easy and quick termination by crimping (crimp information see page [54](#))
- Suitable for connecting harmonized cables
- Part number crimping tool see table on page [57](#)



ODU ELECTRICAL CONTACTS

[Table of Contents](#)



ODU TURNTAC®

ODU TURNTAC socket with solder/screw termination	48
ODU TURNTAC socket with crimp termination	49
ODU contact pin with solder/screw termination	50
ODU contact pin with crimp termination	51

ODU TURNTAC® SOCKET



Slotted contacts

SOLDER/SCREW TERMINATION

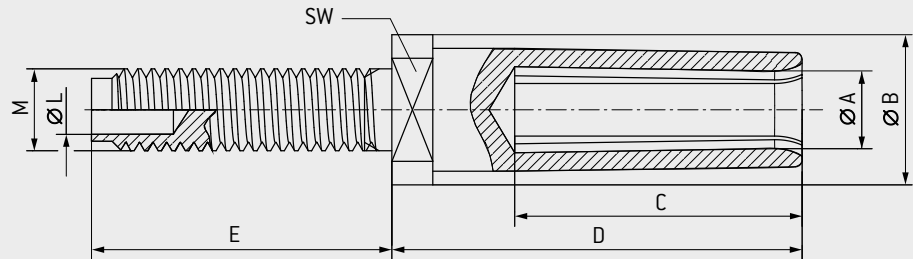
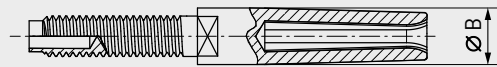


Illustration applies
to part number
167.107 000



Part number	Dimensions								Mechanical data ¹		Electrical data ¹		
	Ø A	Ø B	C	D	SW	E	M	Ø L	Mating force	Demating force	Nominal current	Max. continuous current	Contact resistance
	mm	mm	mm	mm	mm	mm	Thread	mm	N	N	A	A	µΩ
167.106.000.301.000	1.5	4	12.5	17.5	3	10	M2.6	1.25	3	1.5	25	35	600
167.107.000.301.000	2	4.2	12	17	3	12.5	M3	1.8	4	2	30	45	500
167.110.000.301.000	3	7	15	19.5	5	15	M4	2.3	5	2.5	40	65	400
167.111.000.301.000	4	8	15	21	6	19	M5	3	6	3	55	80	300
167.112.000.301.000	5	9	17.5	25	7	19	M5	3	7	3.5	75	115	200
167.113.000.301.000	6	11	21	30	8	22	M6	3.6	8	4	100	145	175
167.115.000.301.000	8	14	25	35	11	26	M8	4.8	10	5	140	200	150
167.117.000.301.000	10	16	25	35	12	30	M10	6.2	12	6	175	260	125

Other variants, sizes and finishes available on request.

¹ See "Technical Information" starting on page 63.

TECHNICAL DATA

- Suitable for contact pins (page 50 and 51)
- Tightening torque see page 59
- Suitable for screwing to power busbars, backplanes and contact blocks
- Cables with lugs can be easily connected
- Cables can be soldered into the solder hole
- Chamber dimensions see page 49

ODU TURNTAC® SOCKET

Slotted contacts



CRIMP TERMINATION

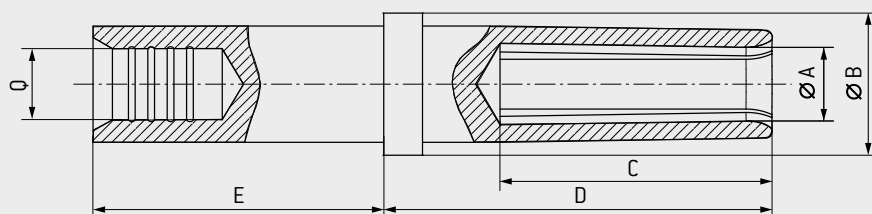
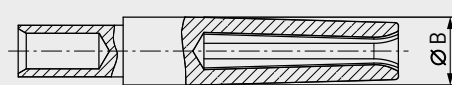


Illustration applies
to part number
167.607 000



Part number	Dimensions						Mechanical data ¹		Electrical data ¹		
	Ø A mm	Ø B mm	C mm	D mm	E mm	Q mm ²	Mating force N	Demating force N	Nominal current A	Max. continuous current A	Contact resistance μΩ
167.606.000.301.000	1.5	4	12.5	17.5	6.5	1.5	3	1.5	25	35	600
167.607.000.301.000	2	4.2	12	17	6.5	2.5	4	2	30	45	500
167.610.000.301.000	3	7	15	19.5	6.5	4	5	2.5	40	65	400
167.611.000.301.000	4	8	15	21	12.5	6	6	3	55	80	300
167.612.000.301.000	5	9	17.5	25	17.5	10	7	3.5	75	115	200

Other variants, sizes and finishes available on request.

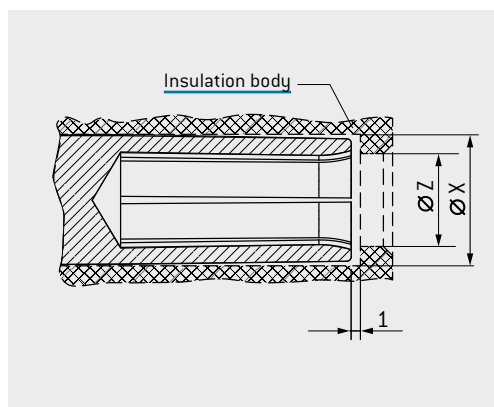
¹ See "Technical Information" starting on page 63.

TECHNICAL DATA

- Suitable for contact pins (page 50 and 51)
- Easy and quick connection by crimping (crimp information starting on page 54)
- Suitable for connecting harmonized cables
- Part number crimping tool see table on page 57

Chamber dimensions for solder/screw termination and crimp termination

Chamber dimensions		
Ø A mm	Ø X mm	Ø Z mm
1.5	3.9 ± 0.03	1.8 + 0.1
2	4.3 ± 0.03	2.3 + 0.1
3	6 ± 0.05	3.3 + 0.1
4	6.7 ± 0.1	4.3 + 0.1
5	8 ± 0.1	5.3 + 0.1
6	9.3 ± 0.1	6.3 + 0.1
8	12.3 ± 0.1	8.3 + 0.1
10	14.3 ± 0.1	10.3 + 0.1

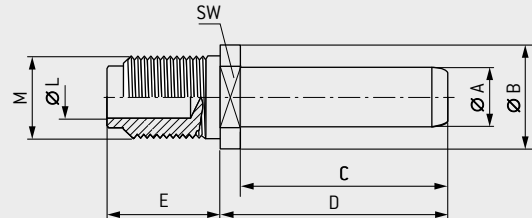
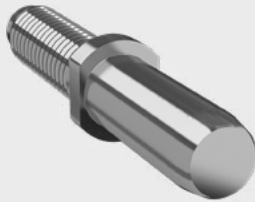


ODU CONTACT PIN



For all ODU TURNTAC® sockets.

SOLDER/SCREW TERMINATION



Part number	Dimensions								
	Ø A	x ¹	Ø B	C	D	SW	E	M	Ø L
	mm	mm	mm	mm	mm	mm	mm	Thread	mm
181.106.000.301.000	1.5	-0.03	4	10	11.5	3	10	M2.6	1.25
181.107.000.301.000	2	-0.03	5	10	11.5	4	12.5	M3	1.8
181.110.000.301.000	3	-0.03	6	14	15.5	5	15	M4	2.3
181.111.000.301.000	4	-0.03	7	14	16	6	19	M5	3
181.212.000.301.000	5	-0.03	7	17.5	19.5	6	19	M5	3
181.113.000.301.000	6	-0.03	8	23	26	7	22	M6	3.6
181.213.000.301.000	6	-0.03	11	23	26	8	22	M8	4.8
181.115.000.301.000	8	-0.03	11	23	26	9	26	M8	4.8
181.215.000.301.000	8	-0.03	14	23	26	11	26	M10	6.2
181.117.000.301.000	10	-0.04	16	23	26	12	30	M10	6.2
181.217.000.301.000	10	-0.04	16	23	26	12	30	M12 × 1.5	7.6

Other variants, sizes and finishes available on request.

¹ Tolerance diameter A.

TECHNICAL DATA

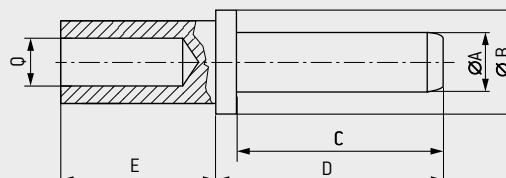
- Suitable for all round ODU TURNTAC sockets
- Tightening torque see page 59
- Suitable for screwing to power busbars, backplanes and contact blocks
- Cables with lugs can be easily connected
- Cables can be soldered into the solder hole

ODU CONTACT PIN

For all ODU TURNTAC® sockets.



CRIMP TERMINATION



Part number	Dimensions						
	Ø A	x ¹	Ø B	C	D	E	Q
	mm	mm	mm	mm	mm	mm	mm ²
181.606.000.301.000	1.5	-0.03	4	10	11.5	6.5	1.5
181.607.000.301.000	2	-0.03	4	10	11.5	6.5	2.5
181.610.000.301.000	3	-0.03	7	14	16	6.5	4
181.611.000.301.000	4	-0.03	8	14	16	12.5	6
181.712.000.301.000	5	-0.03	9	17.5	19.5	17.5	10

Other variants, sizes and finishes available on request.

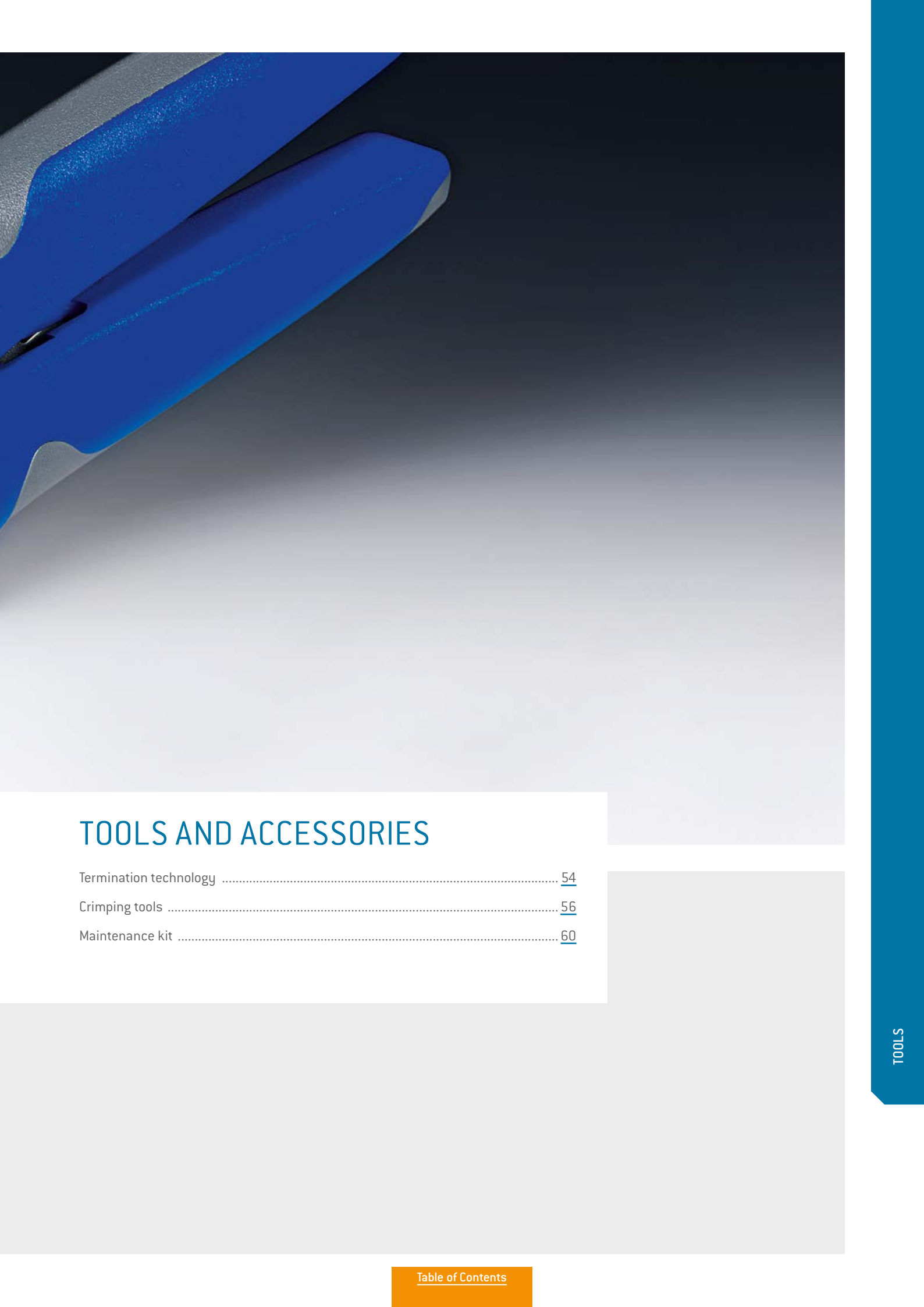
¹ Tolerance diameter A.

TECHNICAL DATA

- Suitable for all round ODU TURNTAC sockets
- Easy and quick termination by crimping (crimp information see page [54](#))
- Suitable for connecting harmonized cables
- Part number crimping tool see table on page [57](#)



ODU ELECTRICAL CONTACTS



TOOLS AND ACCESSORIES

Termination technology	54
Crimping tools	56
Maintenance kit	60

TERMINATION TECHNOLOGY



ODU offers three different contact termination technologies for the electrical contacts:

- Crimp
- Solder
- Screw

CRIMP TERMINATION

Using contacts to establish connecting lines through crimping creates a permanent, secure and corrosion-free connection. Even for lay persons, crimping is easy and quick to carry out.

Through crimping, the conductor and contact materials in the compressed areas become so dense as to create a connection which is nearly gas-tight, and with a tensile strength befitting the conductor material.

Crimping can be carried out in the tiniest of diameters as well as in larger diameters. For small diameters, eight-point crimp tools are used; six-point crimp tools are used for larger dimensions. The corner measurement of the crimping is never larger than the original diameter. The cable insulation is not damaged in the process and can be directly attached to the connector end.

For error-free crimping, the bore diameter must be perfectly fitted to the cable. Such error-free crimping is only guaranteed if using ODU-recommended crimping tools. In order to correctly advise you, we need to know your cable type and profile, preferably by means of a sample and corresponding data sheet.

HEXAGONAL CRIMPING



8-POINT CRIMPING

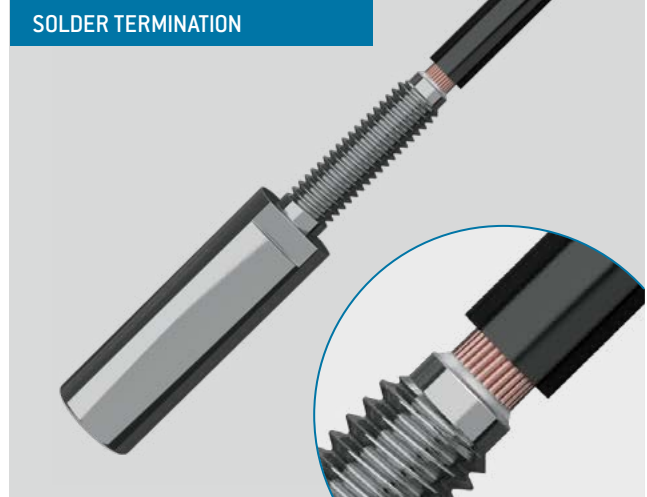




SOLDER TERMINATION

Termination technology in which a molten additional metal [solder] with a lower melting point than the base materials to be connected is used to attach two metallic materials to one another. In contrast to crimping, the wire to be soldered can also be considerably smaller than the intended solder hole. Warning: avoid unacceptable temperature increases in sockets.

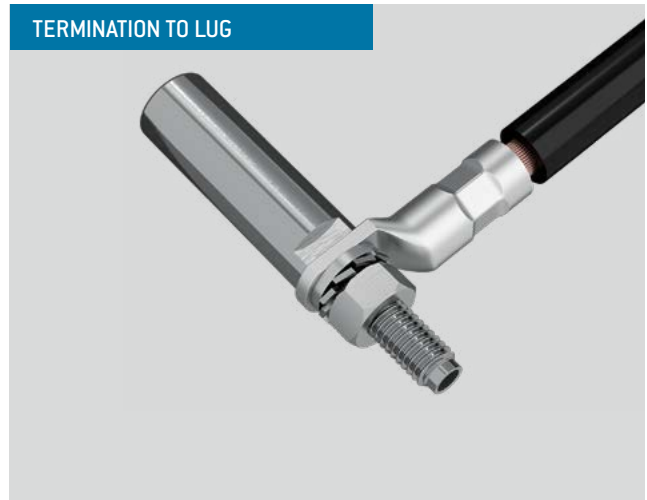
SOLDER TERMINATION



SCREW TERMINATION

This connection is established through lugs with lamellar disks and nuts. Disks and nuts are not included in standard deliveries (are available upon request).

TERMINATION TO LUG



TERMINATION TO POWER BUSBARS



CRIMPING TOOLS

Suitable for all round ODU contacts.

For more crimping information, see table on page [57](#).



8-POINT CRIMPING TOOL FOR CROSS-SECTIONS FROM 0.38 TO 0.5 MM²



PART NUMBER: 080.000.051.000.000

Hand crimping tool with user-friendly digital display and ergonomic design.

HEXAGONAL CRIMPING TOOL FOR CROSS-SECTIONS FROM 1.5 TO 6 MM²



PART NUMBER: 080.000.062.000.000

Reliable hand crimping tool with optimized power transmission and an ergonomic design for easy handling.

HEXAGONAL CRIMPING TOOL FOR CROSS-SECTIONS FROM 10 TO 50 MM²



PART NUMBER: 080.000.064.000.000

High pressing force for weaker hands due to precision mechanics. The folding head facilitates work with bulky connector forms and changing crimp inserts.

FOR CRIMPING JAWS, GO TO PAGE [57](#).

Crimping jaws must be ordered separately.

HEXAGONAL CRIMPING TOOL FOR CROSS-SECTIONS FROM 70 TO 500 MM²



PART NUMBER: 080.000.017.000.000

Very high pressing force for weaker hands due to hydraulics.

FOR CRIMPING JAWS, GO TO PAGE [57](#).

Crimping jaws must be ordered separately.

CRIMPING INFORMATION



Suitable for all round ODU contacts.

Termination cross-section	Stripping length	8-pt-crimping tool	Hexagonal crimping tool	Mechanical hexagonal crimping tool ¹	Hydraulic hexagonal crimping tool ¹
mm ²	mm	080.000.051.000.000	080.000.062.000.000	080.000.064.000.000	080.000.017.000.000
0.38	4.5	> 0.65 < 0.7			
0.5	4.5	> 0.9 < 0.95			
1.50	7		Profile no. 1		
2.5	7		Profile no. 2		
4	7		Profile no. 3		
6	7		Profile no. 3		
10	10			080.000.064.110.000	
16	10			080.000.064.116.000	
25	18			080.000.064.125.000	
35	18			080.000.064.135.000	
50	18			080.000.064.150.000	
70	22				921.000.005.000.009
95	25				921.000.005.000.011
120	30				921.000.005.000.013
150	30				921.000.005.000.014
185	30				921.000.005.000.015
240	50				921.000.005.000.016
300	66				921.000.005.000.017
400	66				921.000.005.000.019
500	66				921.000.005.000.020

¹ Crimp inserts must be ordered separately.

CRIMPING TOOLS



For ODU SPRINGTAC® Flatsockets

B-PROFILE CRIMPING TOOL FOR CROSS-SECTIONS FROM 0.25 TO 0.5 MM²



PART NUMBER: 080.000.050.000.000

Manual crimping tool with locking system for reliable crimping.

B-PROFIL CRIMPING TOOL FOR CROSS-SECTIONS FROM 0.5 TO 4 MM²



PART NUMBER: 080.000.054.000.000

Manual crimping tool with locking system for reliable crimping.

CRIMPING TOOLS



Tools for ODU SPRINGTAC® Flatsockets

Size mm	Termination cross-section mm ²	Crimping tool	
		080.000.050.000.000	080.000.054.000.000
0.64 × 0.64	0.25	Profile 0.25 / position 1	
0.64 × 0.64	0.35	Profile 0.35 / position 1	
0.64 × 0.64	0.5	Profile 0.5 / position 1	
1.6 × 0.6 / 0.8	0.5–1		Profile 4
2.8 × 0.8	1–1.5		Profile 1
4.8 × 0.8	1.5–2.5		Profile 2
6.3 × 0.8	4		Profile 3

Tightening torque for screw termination

Connection thread	Tightening torque (maximum) Nm
M2.3	0.1
M2.6	0.2
M3	0.5
M4	1.2
M5	2
M6	3
M8	6
M10	10
M12 × 1.5	16
M14 × 1.5	22
M16 × 1.5	30
M20 × 2	50
M24 × 2	80
M32 × 2	200

Maximum tightening torque with solid screw termination and standard material (brass).

MAINTENANCE KIT FOR ALL ELECTRICAL CONTACTS



Contact lubrication improves the mechanical properties of contact systems. Cleaning the contact surfaces prior to lubrication is also recommended in order to remove pollution. With appropriate care, wear due to high mating frequency can be significantly minimised and the mating and demating forces reduced. The cleaning and lubricating interval must be individually adapted to circumstances and should only be carried out with products recommended by the contact manufacturer.

ODU has put together a maintenance package to this purpose, so that lubrication can be carried out directly on location. A cleaning brush and a special cleaning cloth, as well as precise instructions allow optimal care of the contacts. In the absence of other specifications, the maintenance package can be used for all ODU contacts and connections.

PART NUMBER: 170.000.000.000.100

For technical properties of the maintenance package please refer our website: www.odu-connectors.com/downloads.

CLEANING INFORMATION

Maintenance instruction 003.170.000.000.000

FURTHER INFORMATION

Never submerge the connector in liquid. The connector may only be put back into operation again when it has been assured that it is completely dry.

Ensure that contact pins are not bent or otherwise damaged. The connector may no longer be used when damage or other signs of wear are detected. Clean with maximum 2.5 bar compressed air to avoid contact damage. A slight blackening of the contact points may occur over the course of the service life and represents no impairment of the electrical properties.

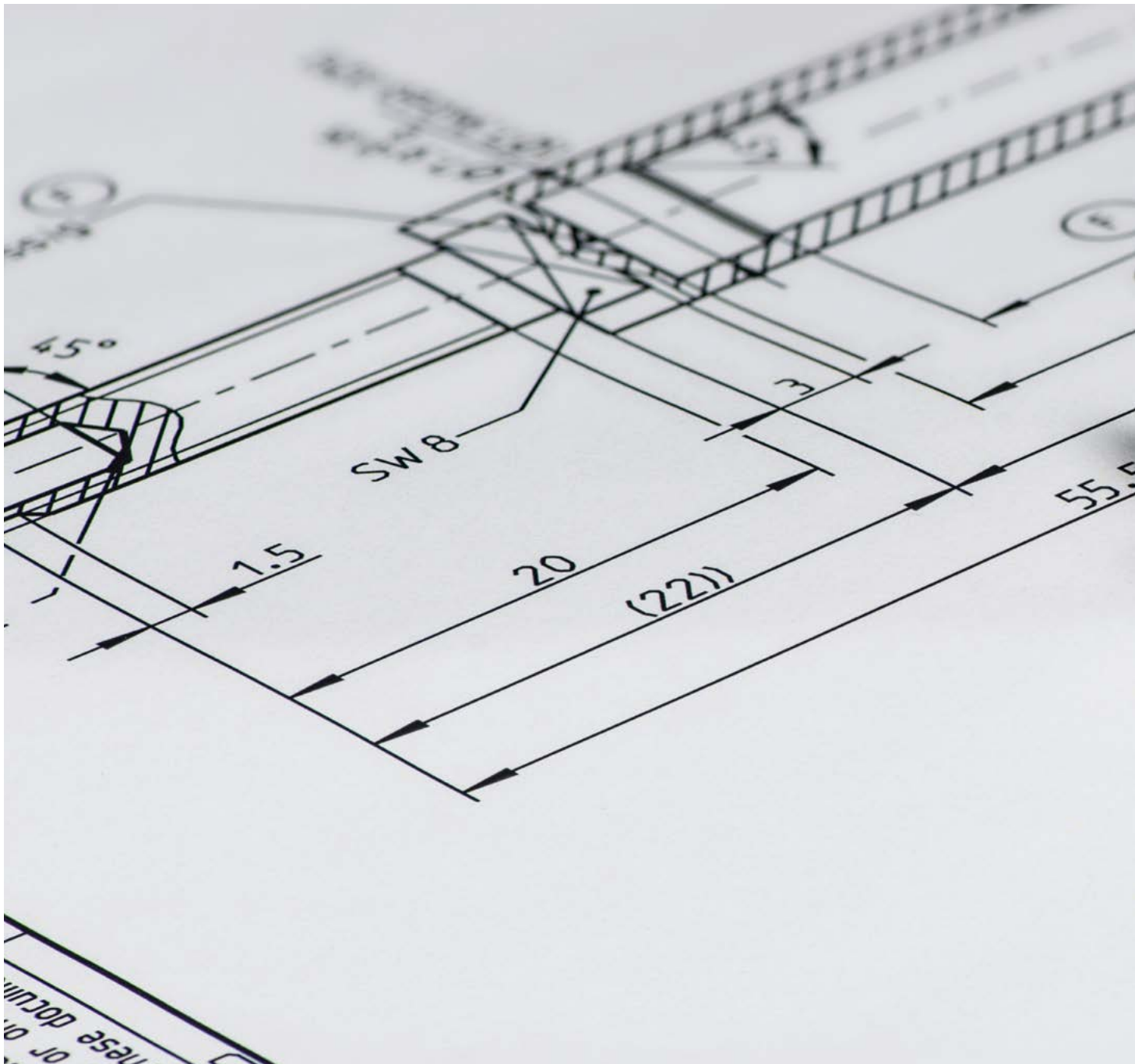
Recommended cleaning agent

Soap: liquid soaps on sodium bicarbonate or potassium base.
Alcohol: ethanol 70 %, isopropyl alcohol 70 %.

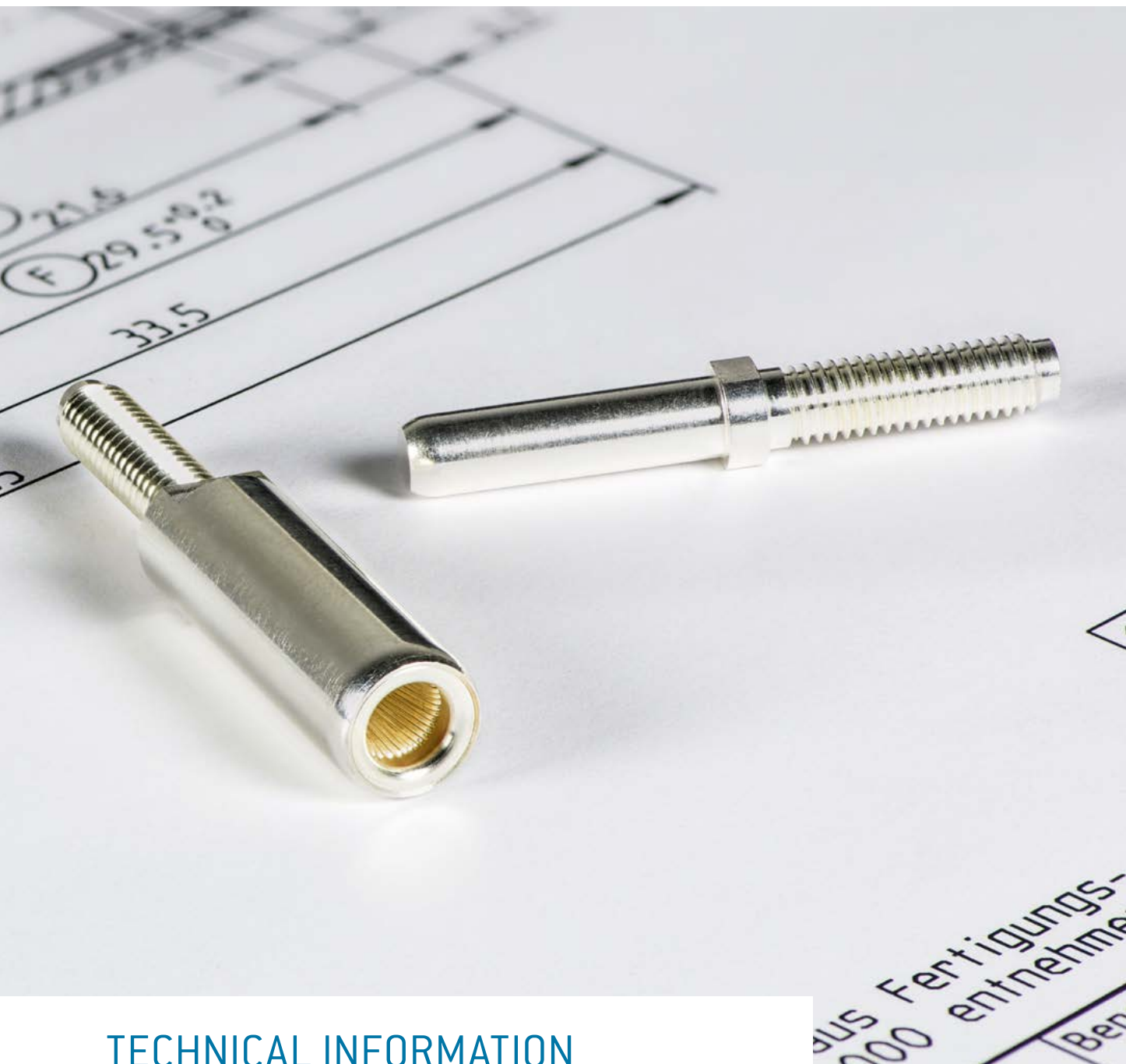
FOR YOUR NOTES



A large, empty light gray rectangular area intended for taking notes.



ODU ELECTRICAL CONTACTS



TECHNICAL INFORMATION

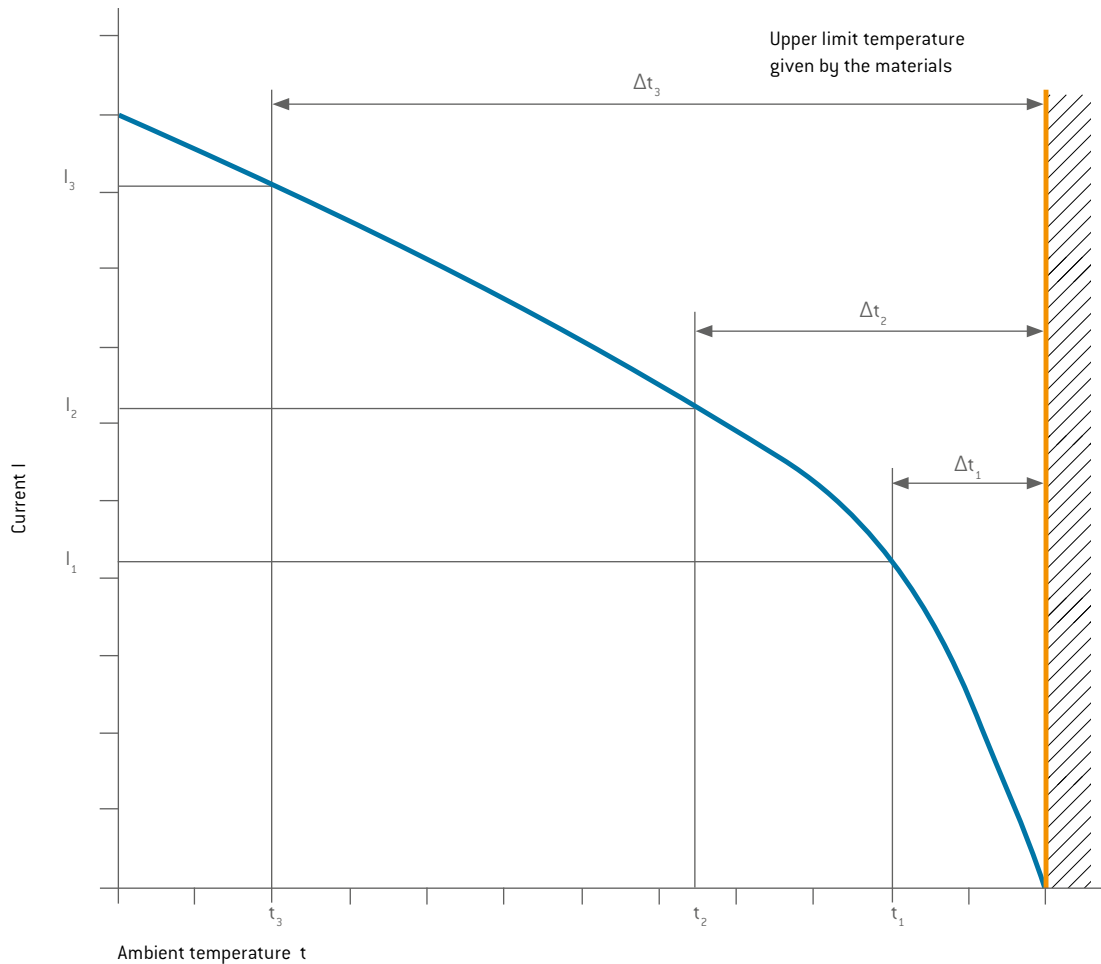
Current-carrying capacity	64
Installation instruction	68
Conversions/AWG	69
Chamber dimensions for ODU SPRINGTAC Flatsockets	70
Technical terms	72

BASE FOR CURRENT-CARRYING CAPACITY



Derating measurement procedure IEC 60512-5-2:2002 [DIN EN 60512-5-2:2003]

STRUCTURE OF THE BASIS CURRENT CARRYING CAPACITY CURVE



A connector's current carrying capacity is determined by measurement. It is determined by taking into account the self-heating due to Joule heat and the ambient temperature, and is limited by the thermal properties of the contact materials used; the upper limit temperatures of these materials should not be exceeded.

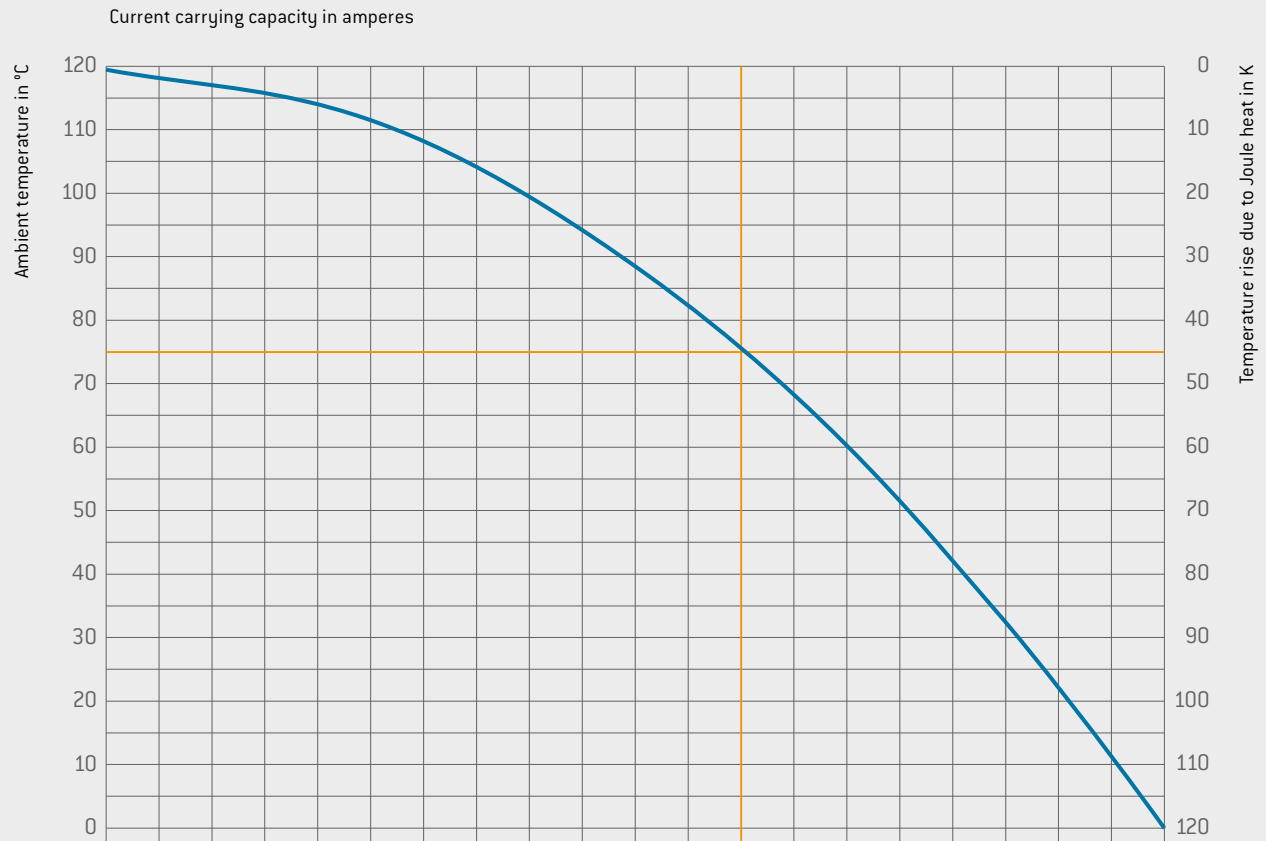
The relationship between current, the temperature increase caused as a result of the power dissipation at the contact resistor and the ambient temperature is depicted in a curve. The curve is drawn in a linear coordinate system with the current " I " as the ordinate and the temperature " t " as the abscissa. The upper limit temperature is used as a limit for the diagram.

In three measurements, the temperature rise due to Joule heat (Δt) is determined at different currents in at least three connectors and the points determined in this process are connected into a parabolic basis curve.

The corrected current carrying capacity curve (**derating curve**) can be derived from the basis curve. The safety factor ($0.8 \times I_n$) can be used to give consideration to such values as manufacturing tolerances as well as to uncertainties in the temperature measurement and in the measurement setup.

CURRENT-CARRYING CAPACITY DIAGRAM

ODU SPRINGTAC®



Ø 0.76	0	1.5	3.5	5	6.5	8	10	11.5	13	15	16.5
Ø 1.02	0	2	4	6	8	10	12	14	16	18	20
Ø 1.5	0	4	8	12	16	20	25	27	31	35	40
Ø 2	0	5	10	15	20	25	30	35	40	45	50
Ø 2.5	0	5	10	15	20	25	30	35	40	45	50
Ø 3	0	5	15	20	25	30	40	50	55	65	70
Ø 4	0	10	20	25	35	45	55	60	70	80	90
Ø 5	0	12	25	40	50	65	75	90	100	115	125
Ø 6	0	15	30	50	65	80	100	115	130	145	160
Ø 8	0	25	45	70	90	115	140	160	180	200	220
Ø 10	0	30	60	85	115	145	175	200	230	260	285
Ø 12	0	40	75	110	150	190	230	265	300	340	375
Ø 14	0	45	90	140	185	230	280	320	360	400	450
Ø 16	0	55	110	165	220	280	340	380	420	460	500
Ø 18	0	60	120	180	245	310	375	430	480	520	570
Ø 20	0	75	150	220	295	370	450	500	550	600	660
Ø 22	0	80	160	235	315	400	480	540	590	650	710
Ø 24	0	80	165	245	330	410	500	575	640	700	770
Ø 26	0	85	175	260	350	435	530	600	675	750	825
Ø 28	0	105	215	320	425	535	650	710	780	850	930
Ø 30	0	120	235	350	470	590	720	800	875	950	1,025
Ø 36	0	150	300	440	590	740	900	1,000	1,100	1,200	1,300

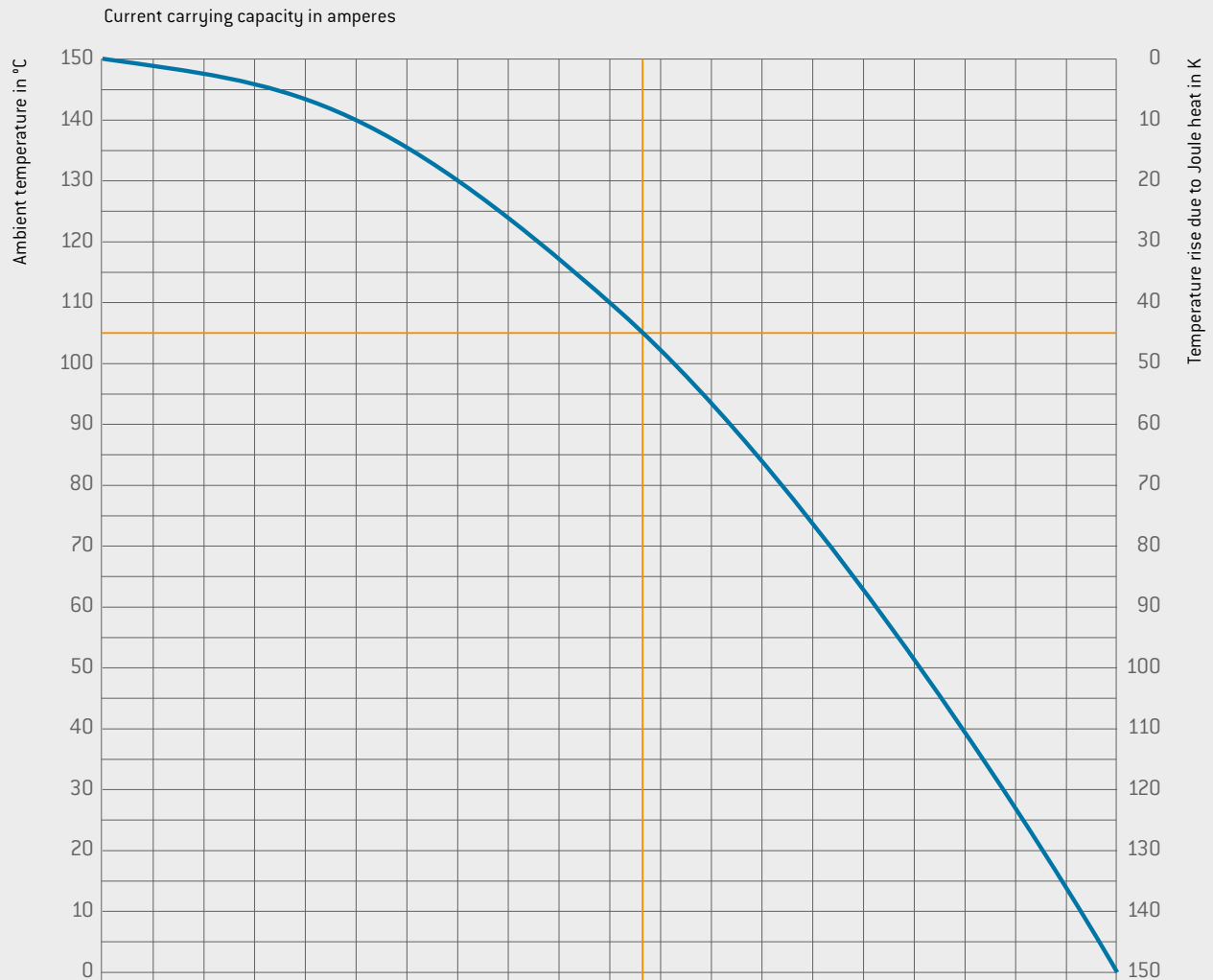
Contact- Ø mm	Nominal current					Max. continuous current				
---------------------	--------------------	--	--	--	--	----------------------------	--	--	--	--

Measurement according to IEC 60512-5-2:2002 (DIN EN 60512-5-2:2003) (basis curve is shown).

Upper limit temperature +120 °C. Connection with the largest specified nominal cross-section.

CURRENT-CARRYING CAPACITY DIAGRAM

ODU LAMTAC®

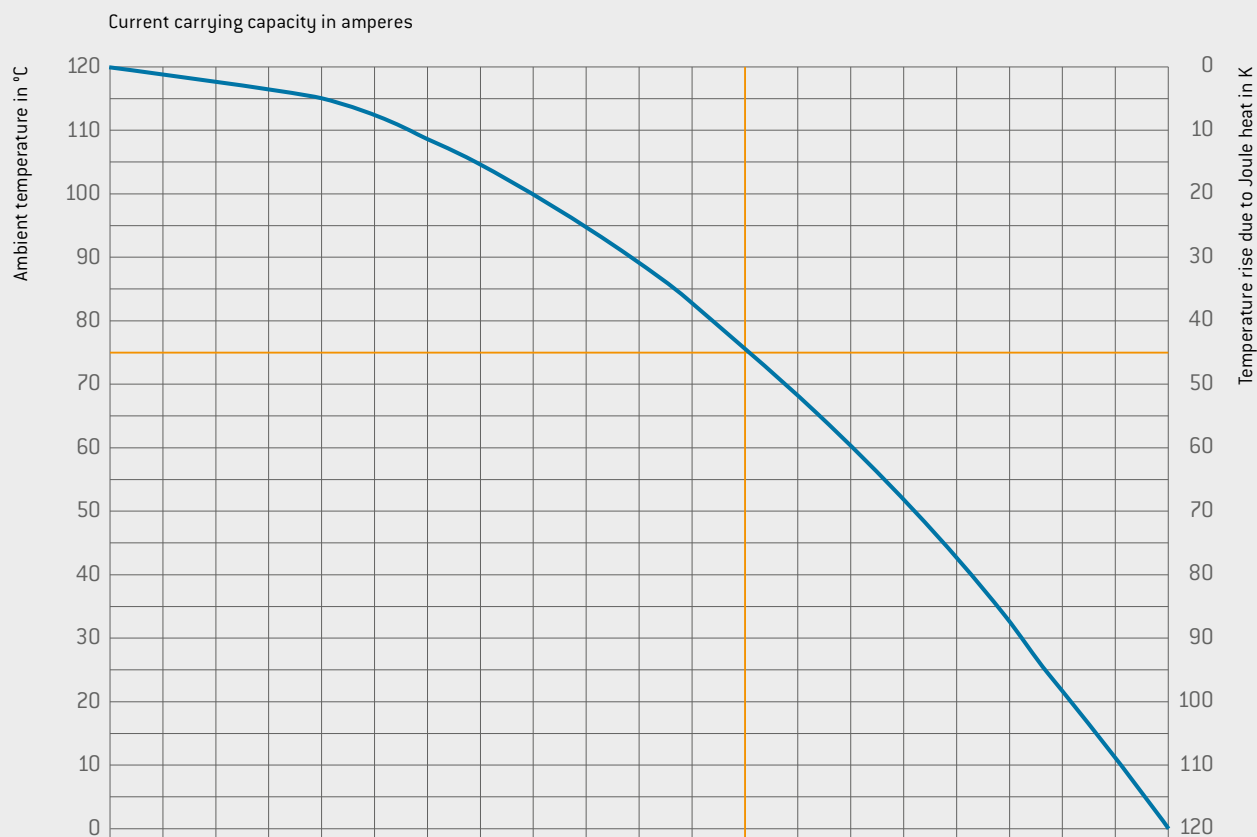


Contact- Ø mm	0	1	4	9	14	18	25	30	35	40	45
Ø 1.5	0	1	4	9	14	18	25	30	35	40	45
Ø 2	0	1	5	10	15	20	30	40	45	55	60
Ø 3	0	1	7	14	20	30	40	55	65	75	80
Ø 4	0	1	10	20	30	40	55	70	80	95	100
Ø 5	0	1	15	30	40	55	75	100	115	130	140
Ø 6	0	1	25	50	75	100	130	170	195	225	245
Ø 8	0	1	30	60	90	120	160	220	250	290	315
Ø 10	0	1	35	70	105	140	185	230	265	310	335
Ø 12	0	1	35	70	110	145	190	250	290	340	375
Ø 16	0	1	65	130	190	260	340	420	480	550	615
Ø 20	0	1	85	170	255	350	450	555	620	700	770
Ø 24	0	1	95	190	290	385	510	680	780	900	970
Ø 28	0	1	160	320	475	635	840	1,100	1,255	1,450	1,570
Ø 30	0	1	170	340	515	690	910	1,190	1,360	1,570	1,700
	Nominal current										
	Max. continuous current										

Measurement according to IEC 60512-5-2:2002 (DIN EN 60512-5-2:2003) (basis curve is shown).
Upper limit temperature +150 °C. Connection with the largest specified nominal cross-section.

CURRENT-CARRYING CAPACITY DIAGRAM

ODU TURNTAC®



Ø 1.5	0	1	4	1	8	1	12	1	16	1	20	1	25	1	28	1	31	1	35	1	39
Ø 2	0	1	5	1	10	1	15	1	20	1	25	1	30	1	35	1	40	1	45	1	50
Ø 3	0	1	6	1	13	1	20	1	26	1	33	1	40	1	47	1	56	1	65	1	72
Ø 4	0	1	9	1	18	1	27	1	36	1	45	1	55	1	63	1	71	1	80	1	88
Ø 5	0	1	12	1	24	1	37	1	49	1	62	1	75	1	85	1	100	1	115	1	126
Ø 6	0	1	15	1	33	1	50	1	65	1	85	1	100	1	115	1	130	1	145	1	160
Ø 8	0	1	23	1	46	1	69	1	92	1	115	1	140	1	160	1	180	1	200	1	220
Ø 10	0	1	28	1	57	1	86	1	115	1	145	1	175	1	200	1	230	1	260	1	285
Contact- Ø mm													Nominal current			Max. continuous current					

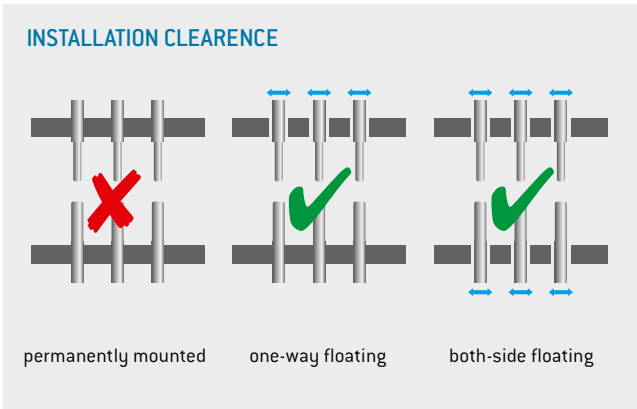
Measurement according to IEC 60512-5-2:2002 (DIN EN 60512-5-2:2003) (basis curve is shown).
Upper limit temperature +120 °C. Connection with the largest specified nominal cross-section.

INSTALLATION INSTRUCTION



ODU contact systems are used both as a single contact and in multi-pin connectors. One side (pin or socket side) or both sides should always have a “floating” mounting in order to compensate for manufacturing and assembly tolerances of the individual system components.

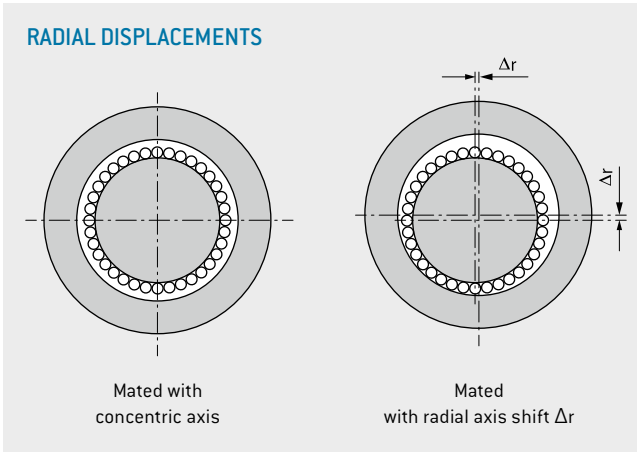
ODU contact systems are not suitable for guiding a plug-in system. Components should be separately provided in order to implement a preliminary guidance piece. Preliminary guidance pieces are always recommended.



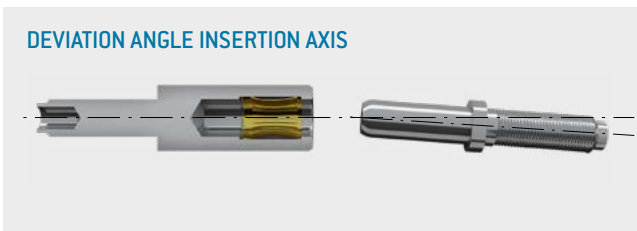
Our ODU contact series are able to compensate for the radial displacements of the insertion axis. The figure shows a cross-section through a mated contact pair with a radial axis shift.

The contact springs or contact bars are still on the mating surfaces and consequently continue to ensure full contact reliability.

Nominal contact diameter mm	max. Δr mm
$\leq \varnothing 2$	0.02
$\leq \varnothing 4$	0.05
$\leq \varnothing 14$	0.1
$\leq \varnothing 30$	0.2



The deviation angle α of the insertion axis of the pin and socket should be max. $\pm 1^\circ$. It is especially important to consider this when implementing a “floating” assembly position.



CONVERSIONS/AWG (AMERICAN WIRE GAUGE)



Circular wire					
AWG	Diameter		Cross-section mm ²	Weight kg/km	Max. resistance Ω/km
	Inch	mm			
4/0 [259/21]	0.6010	15.300	107.0	997.00	0.17
3/0 [259/22]	0.5360	13.600	85.0	793.00	0.22
2/0 [259/23]	0.4770	12.100	67.4	628.00	0.27
1/0 [259/24]	0.4240	10.800	53.5	497.00	0.34
1 [259/25]	0.3780	9.600	42.2	395.00	0.43
2 [259/26]	0.3350	8.500	33.6	312.00	0.55
4 [133/25]	0.2660	6.800	21.1	195.00	0.87
6 [133/27]	0.2100	5.300	13.3	122.00	1.38
8 [133/29]	0.1670	4.200	8.37	76.80	2.18
10 [1]	0.1019	2.590	5.26	46.77	3.45
10 [37/26]	0.1150	2.921	4.74	42.10	4.13
12 [1]	0.0808	2.050	3.31	29.41	5.45
12 [19/25]	0.0930	2.362	3.08	27.36	5.94
12 [37/28]	0.0910	2.311	2.97	26.45	6.36
14 [1]	0.0641	1.630	2.08	18.51	8.79
14 [19/27]	0.0730	1.854	1.94	17.23	9.94
16 [1]	0.0508	1.290	1.31	11.625	13.94
16 [19/29]	0.0590	1.499	1.23	10.928	15.70
18 [1]	0.0403	1.020	0.823	7.316	22.18
20 [1]	0.0320	0.813	0.519	4.613	35.10
20 [7/28]	0.0390	0.991	0.563	5.003	34.10
20 [19/32]	0.0420	1.067	0.616	5.473	32.00
22 [1]	0.0253	0.643	0.324	2.883	57.70
22 [19/34]	0.0330	0.838	0.382	3.395	51.80
24 [1]	0.0201	0.511	0.205	1.820	91.20
24 [7/32]	0.0250	0.635	0.227	2.016	86.00
24 [19/36]	0.0270	0.686	0.241	2.145	83.30
26 [1]	0.0159	0.404	0.128	1.139	147.00
26 [7/34]	0.0200	0.508	0.141	1.251	140.00
26 [19/38]	0.0220	0.559	0.154	1.370	131.00
28 [1]	0.0126	0.320	0.0804	0.715	231.00
28 [7/36]	0.0160	0.406	0.0889	0.790	224.00
28 [19/40]	0.0170	0.432	0.0925	0.823	207.00
30 [1]	0.0100	0.254	0.0507	0.450	374.00
30 [7/38]	0.0130	0.330	0.0568	0.505	354.00
32 [1]	0.0080	0.203	0.0324	0.288	561.00
32 [7/40]	0.0110	0.279	0.0341	0.303	597.10
34 [1]	0.0063	0.160	0.0201	0.179	951.00
34 [7/42]	0.0070	0.180	0.0222	0.197	1,491.00
36 [1]	0.0050	0.127	0.0127	0.1126	1,519.00
36 [7/44]	0.0060	0.150	0.0142	0.1263	1,322.00

The American Wire Gauge (AWG) is based on the principle that the cross-section of the wire changes by 26 % from one gauge number to the next. The AWG numbers decrease as the wire diameter increases, while the AWG numbers increase as the wire diameter decreases. This only applies to solid wire.

However, stranded wire is predominately used in practice. This has the advantage of a longer service life under bending and vibration as well as greater flexibility in comparison with solid wire.

Stranded wires are made of multiple, smaller-gauge wires (higher AWG number). The stranded wire then receives the AWG numbers of a solid wire with the next closest cross-section to that of the stranded wire. In this case, the cross-section of the stranded wire refers to the sum of the copper cross-sections of the individual wires.

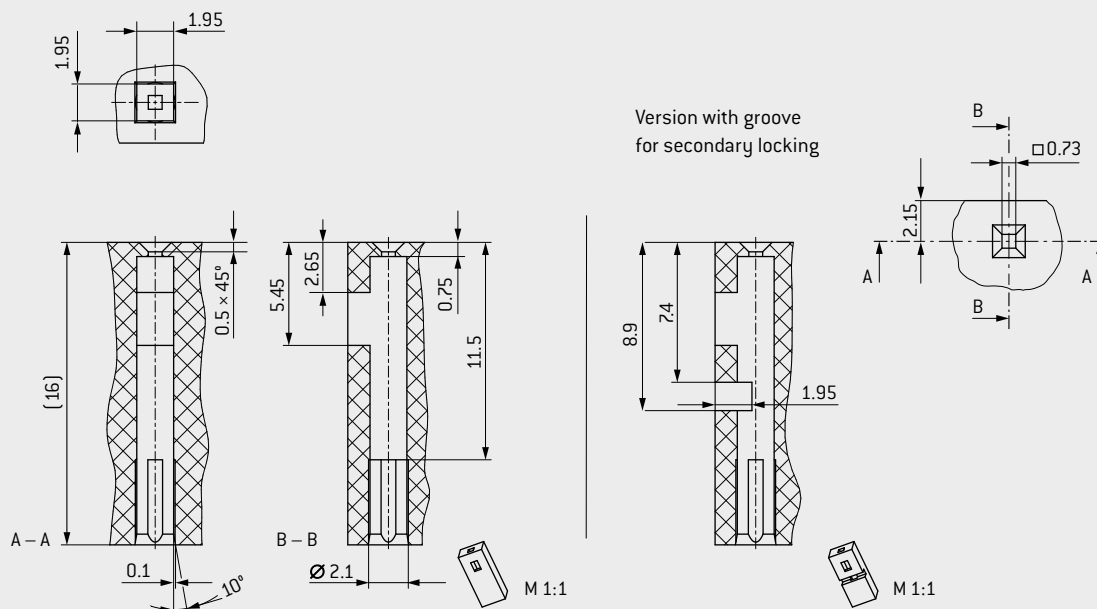
Accordingly, strands with the same AWG number but different numbers of wires differ in cross-section. For instance, an AWG 20 strand of 7 AWG 28 wires has a cross-section of 0.563 mm², while an AWG 20 strand of 19 AWG 32 wires has a cross-section of 0.616 mm².

Source: ASTM

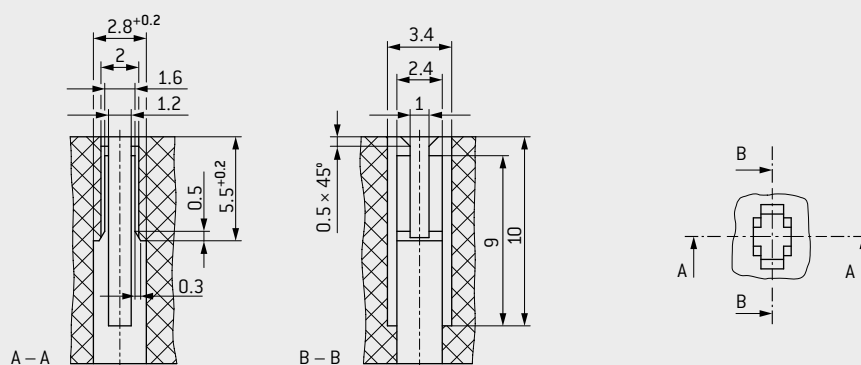
ODU SPRINGTAC® FLATSOCKETS



CHAMBER DIMENSIONS FOR 0.64 × 0.64 MM



CHAMBER DIMENSIONS FOR 1.6 × 0.6 / 0.8 MM

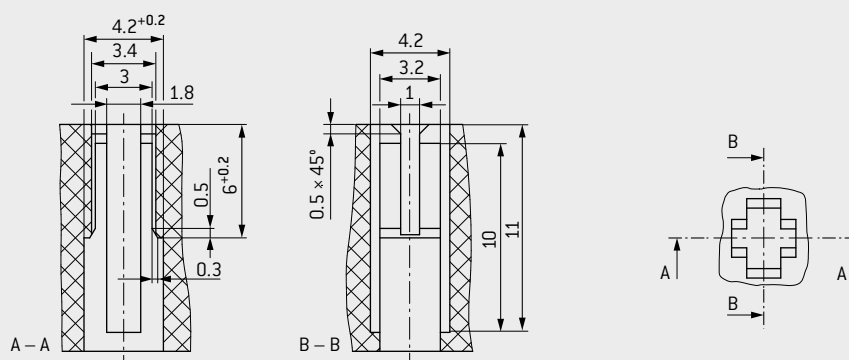


Dimensions without tolerance statement according to ISO 2768:1989 [DIN ISO 2768:1991] fine.

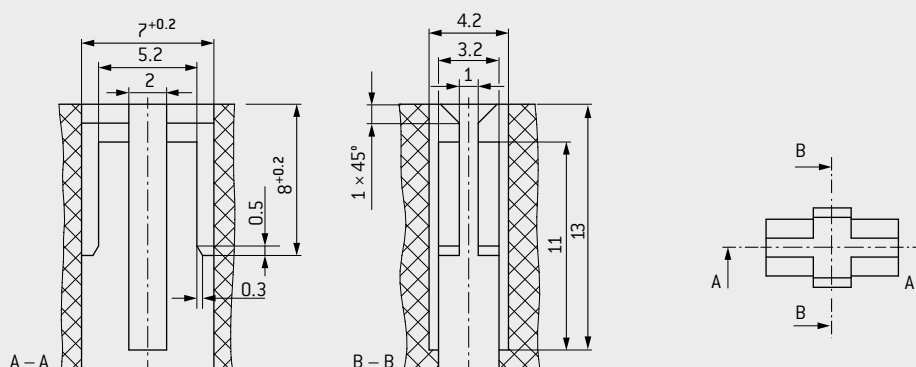
ODU SPRINGTAC® FLATSOCKETS



CHAMBER DIMENSIONS FOR 2.8 × 0.8 MM¹



CHAMBER DIMENSIONS FOR 6.3 × 0.8 [4.8 × 0.8]¹



Dimensions without tolerance statement according to ISO 2768:1989 [DIN ISO 2768:1991] fine.

¹ Slightly increased mating and demating forces result for the articles 190.224 ... 000 and 190.225 ... 000.

TECHNICAL TERMS



AMBIENT TEMPERATURE

Temperature of the air or other medium in which a piece of equipment is intended to be used in (IEC 44/709/CDV:2014 (VDE 0113-1:2014)).

AWG

American Wire Gauge (see page [69](#)).

BASIS CURVE

Metrologically established current carrying capacity curve for connectors according to the measurement procedure described in IEC 60512-5-2:2002 (DIN EN 60512-5-2:2003) depending on the permissible limit temperature of the materials (see page [64](#)).

CONNECTORS

Also known as connectors without contact rating (COC): (IEC 61984:2008 (VDE 0627:2009)). An element which enables electrical conductors to be connected and is intended to create and/or separate connections with a suitable counterpart.

CONNECTORS WITH BREAKING CAPACITY (CBC) (PLUG DEVICE)

A connector which, when used correctly, may be mated or demated when live or under load.

CONTACT RESISTANCE

Total resistance value measured from terminal to terminal. In this case, the resistance is significantly lower than the contact resistance. The specifications are average values.

CORES

Electrical conductor, solid wire or multi-wire strand, with insulation as well as any conductive layers. Cables or leads may have one or more cores.

CRIMPING AREA

The specified area of the crimp barrel in which the crimp termination is executed by means of deforming or shaping the barrel under pressure around the conductor.

CRIMP BARREL

A terminal sleeve which can accommodate one or more conductor and be crimped by a crimping tool.

CRIMP CONNECTION (CRIMP TERMINATION)

The permanent, non-detachable and solder-free mounting of a contact to a conductor via deforming or shaping under pressure to make a good electrical and mechanical connection. Executed with crimping tool, press or automatic crimping machine (see page [54](#)).

CURRENT-CARRYING CAPACITY

(NOMINAL CURRENT AND MAXIMUM CONTINUOUS CURRENT)

The data relates to adequately dimensioned connection cable in accordance with IEC 60228:2004 (VDE 0295:2005; class 5), so that no significant temperature increase here. The indicated temperature increase takes place through the contact. The specifications are average values.

DERATING CURVE

The corrected current-carrying capacity curve, derived from the base curve determined ($0.8 \times$ measured current). It factors in manufacturing tolerances as well as uncertainties in temperature measurement and measurement arrangement (see derating measurement method).

DERATING-MEASUREMENT METHOD

IEC 60512-5-2:2002 (DIN EN 60512-5-2:2003)

Measurement method to determine the current-carrying capacity of connectors in consideration of the maximum permissible limit temperature (see page [64](#)).

LOWERMOST LIMIT TEMPERATURE

The lowest permissible temperature at which a connector may be operated (see operation temperature).

LUBRICATION

All standard contacts are lubricated at the factory. We recommend the ODU maintenance package for subsequent lubrication (see page [60](#)).

MATERIALS (STANDARD DESIGN)

Pins and carriers of the sockets are manufactured from a CuZn alloy and silver or gold-plated. The lamellas consist of a CuBe alloy and are also silver or gold-plated. The springwire contact wires consist of a CuSn alloy and are also silver or gold-plated.

TECHNICAL TERMS



MATING AND DEMATING FORCE

The force required to fully insert or withdraw plugable elements without the influence of a coupling or locking device.

The values are valid for the new condition. The data represents average values with a potential fluctuation of $\pm 50\%$.

MATING CYCLES

Mechanical actuation of connectors and plug devices via push and pull action. A mating cycle consists of one mating and demating action.

Standard value for:

ODU SPRINGTAC	100,000
ODU SPRINGTAC Flatsocket	50,000
ODU LAMTAC	10,000
ODU TURNTAC	10,000

These values only apply to the following conditions:
a clean environment, appropriate radial guidance and flawless counterpins.

MAX. CONTINUOUS CURRENT

The metrologically determined amperage at room temperature (approx. 20 °C) which increases the contact temperature to the limit temperature. The values specified in the catalog apply to either individual contacts or completely assembled inserts/modules, as indicated.

NOMINAL CURRENT

IEC 60512-5-2:2002 (DIN EN 60512-5-2:2003)

See rated current.

OPERATING TEMPERATURE

Range between the uppermost and lowermost temperature limits.

ODU SPRINGTAC	– 40 °C to +120 °C
ODU SPRINGTAC Flatsocket	– 40 °C to +120 °C
ODU LAMTAC	– 40 °C to +150 °C
ODU TURNTAC	– 40 °C to +120 °C

RATED CURRENT (NOMINAL CURRENT)

The metrologically determined current which is permitted to flow continuously through all contacts at the same time and will increase the contact temperature by 45 Kelvin. The amperage is determined according to the derating measurement method (IEC 60512-5-2:2002 (DIN EN 60512-5-2:2003)) and derived from the derating curve.

SOLDER CONNECTION (SOLDER TERMINATION)

Termination technology in which a molten additional metal (solder) with a lower melting point than the base materials to be connected is used to attach two metallic materials to one another.

SURGE CURRENT

One-time impulse current with a 10 ms load duration.

TERMINATION CROSS-SECTION

The specified cross-sections correspond to a “fine-wire” conductor structure pursuant to IEC 60228:2004 (VDE 0295:2005; class 5):-

TERMINATION TECHNOLOGIES

Methods for connecting the leads to the electro-mechanical element, such as solder-free connections pursuant to IEC 60352 (DIN EN 60352): crimp, screw connection etc. or soldering connection (see page 54).

UPPERMOST LIMIT TEMPERATURE

The maximum permissible temperature at which a connector may be operated. It includes contact heating through current-carrying capacity (see operation temperature). Please consult ODU for high-temperature applications.

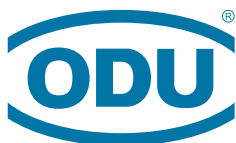
WIRE

Wires (solid conductors) are available with an insulator sleeve and/or electrical shielding. Cables or conductors may be made up of one or more wires.

GENERAL NOTE

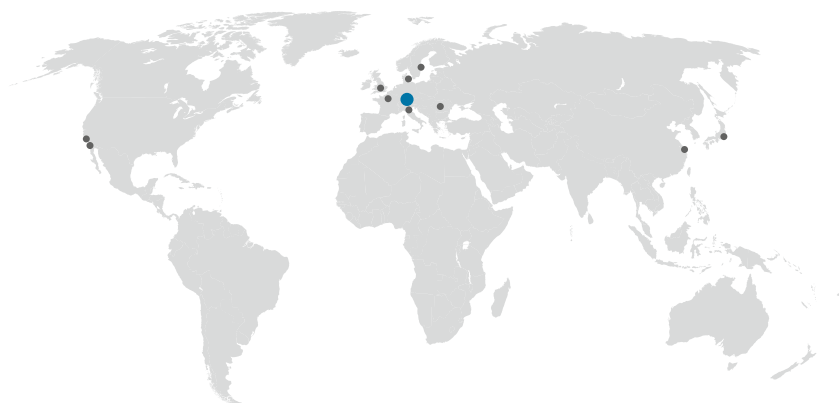
The connectors listed in this catalogue are intended for use in high voltage and frequency ranges. Suitable precautionary measures must be taken to ensure that people do not come into contact with live conductors during installation and operation.

All entries in this catalogue were thoroughly reviewed before printing. ODU reserves the right to make changes based on the current state of knowledge without prior notice without being obliged to provide replacement deliveries or refinements of older designs.



A PERFECT ALLIANCE.

ODU GROUP WORLDWIDE



HEADQUARTERS

ODU GmbH & Co. KG

Pregelstraße 11, 84453 Mühldorf a. Inn, Germany

Phone: +49 8631 6156-0, Fax: +49 8631 6156-49, E-mail: zentral@odu.de

SALES SUBSIDIARIES

ODU Denmark ApS

Phone: +45 2233 5335

E-mail: sales@odu-denmark.dk

www.odu-denmark.dk

ODU France SARL

Phone: +33 1 3935-4690

E-mail: odu@odu.fr

www.odu.fr

ODU Italia S.R.L.

Phone: +39 331 8708847

E-mail: sales@odu-italia.it

www.odu-italia.it

ODU Japan K.K.

Phone: +81 3 6441 3210

E-mail: sales@odu.co.jp

www.odu.co.jp

ODU Scandinavia AB

Phone: +46 176 18262

E-mail: sales@odu.se

www.odu.se

ODU (Shanghai)

International Trading Co., Ltd.

Phone: +86 21 58347828-0

E-mail: oduchina@odu.com.cn

www.odu.com.cn

ODU-UK Ltd.

Phone: +44 330 002 0640

E-mail: sales@odu-uk.co.uk

www.odu-uk.co.uk

ODU-USA, Inc.

Phone: +1 805 484-0540

E-mail: sales@odu-usa.com

www.odu-usa.com

Further information and specialized
representatives can be found at:

www.odu-connectors.com/contact

PRODUCTION AND LOGISTICS SITES

Germany Otto Dunkel GmbH

China ODU (Shanghai) Connectors Manufacturing Co.Ltd

Mexico ODU Mexico Manufacturing S.R.L. de C.V.

Romania ODU Romania Manufacturing S.R.L.

USA ODU-USA, Inc.

ODU North American Logistics



Simply scan the QR code
to download the entire brochure.

KOMMA Werbeagentur | 84453 Mühldorf a. Inn

ODU ELECTRICAL CONTACTS / B / 0418 / D